



FIGURES MODELED IN CLAY BY  
*Gladys Mitchell*

**FACULTY**





James Edward Allen, president, A. B. Hampden Sydney college, L. L. D. Hampden Sydney college; American Philological Association Randolph County Historical Society, American Geographic Society, Phi Beta Kappa, Kappa Delta Pi. Author of "The Minimum Salary of a Rural Presbyterian Pastor", 1930.



K. K. Loemker, dean of men, psychology department, M. A. University of Chicago, Ph. B. University of Chicago, Sigma Xi.

Lee Fairchild Bacon, dean of women, A. B. University of Wisconsin, M. A. University of Wisconsin, M. A. Columbia University, Delta Gamma, Phi Delta Gamma.



E. V. Bowers, dean of the College of Arts and Sciences, Psychology department, M. A. Ohio State University, Ph. D. Ohio State University, Ph. B. Otterbein College, Kappa Delta Pi.

Otis G. Wilson, dean of the Teachers' College, education department, A. B. West Virginia University, A. M. West Virginia University, State Education Association, National Educational Association, National Association of College Teachers of Education, Kappa Delta Pi, Phi Beta Kappa.





J. David Yarbrow, French Department, A.B. University of Kentucky, M.A. Columbia University. Phi Beta Kappa.



Mrs. Jane R. Griffith, Psychology Department, B.S. Hillsdale College, M.A. University of New Mexico.



A. E. McCaskey, Jr., Engineering Department, B.S. West Virginia University, M.S.C.E. West Virginia University, A.S.C.E., West Virginia Society of Professional Engineers, Society for the Promotion of Engineering Education, Delta Rho Delta Theta. Faculty advisor to the Delta Rho Delta Theta.

Harold M. Hayward, Sociology Department, M. A. Boston University, Ph. D. Clark University, B. R. E. Boston University. Pi Gamma Mu.



Mary Ann Williamson, English Department, A. B. Concord State Teachers College, M. A. University of Kentucky. A. A. U. W., A. A. U. P., National Council of English Teachers.



John H. Zell, Engineering Department, B. S., C. E. Missouri School of Mines and Metallurgy, Civil Engineering Degree from State of West Virginia. Huntington Engineers Club, American Association of Professional Engineers, Pi Kappa Alpha, Delta Rho Delta Theta, Franklin Institute, West Virginia Society of Professional Engineers.

# FACULTY



Mrs. George Lyon, Home Economics Department, M.A. Columbia University, B.S. University of Missouri. American Association of University Professors, Kappa Omicron Phi. Sponsor for Kappa Omicron Phi and Sigma Sigma Sigma Sorority.

Charlotte Berryman, Physical Education Department, A. B. West Virginia University, M. A. Columbia University. Red Cross Life Saving Corporation for Women, Phi Beta Kappa, Vice-president of the State Physical Education Association, Legislative Council of the Midwest of Physical Education Associations. Sponsor of Theta Rho Sorority.



L. E. Tucker, Speech Department, B.A. Culver Stockton College, M.A. State University of Iowa. Theta Alpha Phi, Alpha Psi Omega, Lambda Chi Alpha. Faculty Sponsor of Alpha Psi Omega.

William Powell Hooper, Bible Department, A. B. Washington and Lee University.





Albert R. Halley, English Department. B. S. Vanderbilt University, M. A. Vanderbilt University, M. D. Vanderbilt University, Ph. D. Harvard University. Phi Beta Kappa.



Mrs. G. B. Harrison, Commerce Department. A. B. Marshall College, M. A. Ohio State. Kappa Tau Phi.

Myrtle MacDannald, Home Economics Department. B. S. Ohio University, M. A. Columbia. Sponsor of Home Economics Club.



L. B. Murdock. German Department. A. B. Lombard College, M. A. Northwestern University. Phi Beta Kappa, Blue Key, Pi Gamma Mu.

## FACULTY

C. R. Ogden, English Department. M. A. West Virginia University.



Tom Dandeleit, Physical Education Department. A. B. Marshall College. M. A. West Virginia University. Sponsor of the Newman Club.

John L. Martin, Spanish and French Departments. A. B. Marshall College, M. A. University of Kentucky.



A. O. Ranson, Speech Department. M. A. University of Wisconsin. Alpha Psi Omega.

William Page Pitt, Journalism Department. A. B. Muskingum College, M. S. J. Pulitzer School of Journalism, Columbia University. Sigma Delta Chi, Executive Secretary and Founder of the United High School Press. Faculty Advisor *The Parthenon*. Author of "The Law of Libel in West Virginia," Columbia.



H. R. Pinckard, Journalism Department. A. B. Marshall College. Sigma Delta Chi, Pi Delta Epsilon. Editor of *The Herald-Advertiser*.



Horace Gresham Toole, History Department. A. B. DePauw University, A. M. University of Chicago, Ph. D. University of Pennsylvania. Pi Gamma Mu. Sponsor of Alpha Theta Chi.



Mrs. Florence H. VanBibber, Psychology Department. B. A. Randolph Macon Woman's College, M. A. University of Arizona, Ph. D. University of Arizona. Pi Lambda Theta, Kappa Delta, Social Sorority, Chi Beta Phi. Faculty Advisor to Pi Kappa Sigma.

Mary Wood Whitehurst, Music Department. Bachelor of Music from Hollins, M. A. from Columbia. Sponsor of Alpha Sigma Alpha.



Roy C. Woods, Education Department. A. B. Penn College, M. S. Penn College, M. A. University of Iowa, Ph. D. University of Iowa. Phi Delta Kappa, Kappa Delta Pi.

# FACULTY

H. C. Darlington, Biology Department. A. B. West Virginia University, M. A. West Virginia University. Chi Beta Phi.



James Paul Stoakes, English Department. A. B. Wayne University, M. A. University of Wisconsin. Alpha Kappa Pi.

Frederick E. Brown, Commerce Department. A. B. Marshall College, M. S. University of Illinois.



Conley H. Dillon, Political Science Department. A. B. Marshall College, M. A. Duke University, Ph. D. Duke University, Southern Political Science Association, American Association of University Professors, Pi Sigma Alpha, American International Law Association. International Labor Association. Sponsor of International Relations Club. Author of "The Interpretation and Revision of International Labor Convention"; Co-author with Thomas C. Donnelly of "The Government of West Virginia."

L. J. Todd, Chemistry Department. A. B. Muskingum College, M. A. Columbia University, Ph. D. Columbia University. Sigma Xi, Phi Lambda Epsilon. Sponsor of Chi Beta Phi.



W. H. Franklin, English Department. M. A. Harvard, A. B. Allegheny College.





Leslie M. Davis, Geography Department. A. B. Indiana University, M. B. A. Northwestern University, Ph. D. University of Chicago.



Frances Laird, Training School. A. B. Marshall College, M. A. University of Michigan. Kappa Delta Pi.



Wilbert H. Norton, Commerce Department. A. B. Lynburg College, Ll. B. University of Virginia.

Marius Blesi, English and Speech Departments. A. B. Harvard, M. A. Harvard, Ph. D. University of Virginia. Editor of the 'Marshall Review.' Author of "Life and Letters of Ann Cora Mowatt."



Louise McDonough, Physical Education Department. B. E. Western Illinois State Teachers College, M. A. Columbia University. Sponsor of Women's Athletic Association.



Robert Lloyd Beck, Philosophy Department. A.B. Wake Forest College, Ph.D. Cornell. Sponsor of Phi Tau Alpha.



# FACULTY



Virginia Rider, Training School. A. B. West Virginia University, M. A. University of Michigan.

Hazel Daniels, Training School. A.B. West Virginia University M. A. Columbia.



F. A. Gilbert, Botany Department. B. S. Massachusetts State College. M. A. Harvard University. Ph.D. Harvard University. Lambda Chi Alpha, Gamma Alpha, Chi Beta Phi.

A. Conn Klinger, History Department. A.B. Ohio Wesleyan, A. M. University of Wisconsin, Ph.D. University of Wisconsin.







E. M. Simons, Engineering Department. B. S. M. E. from Carnegie Institute of Technology. Phi Kappa Phi, West Virginia Society of Professional Engineers, A.S.M.E. Sponsor of Chi Beta Phi and D-Rho D-Theta.



Mrs. Martha Rummell, Training School. B. S. University of Cincinnati, M. Ed. University of Cincinnati. Sponsor of YWCA.



Joseph S. Jablonski, Art Department. A. B. Harvard College, M. A. Harvard University. American Association of University Professors.

John L. Stender, English and Journalism Departments. A. B. West Virginia University, M. A. West Virginia University.



Mrs. Caroline Fore Dwight, Commerce Department. A. B. Marshall College, M.B.A. Ohio State. Beta Gamma Sigma, Kappa Delta Pi.



Curtis F. Baxter, English Department. A. B. Marshall College, M. A. Washington Jefferson. National Council of Teachers of English, Modern Language Association. Chairman of the Artist Series.



# FACULTY



Clara E. Wiltse, Art Department. A. B. University of Kentucky, M. A. Syracuse University.

Mrs. R. W. Amick, Training School. A. B. Marshall College.



L. E. VanderZalm, Education Department. A. B. University of Michigan, M. A. Columbia. State Educational Association, National Educational Association, Kappa Delta Pi, Phi Delta Kappa.

Albert Graham Moseley, Jr. Chemistry Department. A. B. Howard College, M. S. University of Nebraska. Phi Lambda Upsilon, Chi Beta Phi. Sponsor of Digamma.





Nina Ernestine Carroll, College Nurse. R. N. of the University of Virginia.



Oda K. Peterson, Training School. A. B. Fairmont Teachers College, M. A. University of Cincinnati.

Ruth Robinson, Physical Education Department. B. S. Michigan State Normal, M. A. Columbia. Freshman Class Advisor.



Virginia Foulk, Education Department. M. A. Columbia, A. B. West Virginia University. Phi Beta Kappa. Sponsor of Kappa Tau Phi, Councilor of Kappa Delta Pi.

# FACULTY

C. E. Hedrick, History Department. A. B. Lebanon University, A. M. University of Chicago, Ph. D. George Peabody Teachers College. Kappa Delta Pi, Member of Graduate Council. Author of "Social and Economic Aspects of Slavery in the Trans-Montane."



A. E. Harris, Political Science Department. A. B. Marshall College, M. A. University of Pennsylvania, Ph. D. State University of Iowa. American Association of University Professors, American Political Science Association.

Kerr Whitfield, Business Manager of the Athletic Department. B. S. Davis and Elkins.



Ralph Preston Hron, Physics Department. B. S. Efworth University, M. A. University of Oklahoma, Ph. C. University of Oklahoma. Lambda Chi Alpha, Chi Beta Phi, Phi Delta Kappa, Phi Delta Chi. Advisor to Chi Beta Phi.

Maurice G. Burnside, Political Science Department. B. S. Furman University, M. A. University of Texas, Ph. D. Duke University. Pi Gamma Mu, American Political Science Association, Southern Political Science Association, American Association of University Professors, Pi Sigma Alpha. Sponsor of the Pre-Law Fraternity. Author of: "Falkland Islands Controversy," 1928; "Pardon, Parole, and Indeterminate Sentence, with special reference to South Carolina."



Farley W. Bell, Freshman Football Coach, Freshman Basketball Coach, Varsity Baseball, Scout for Football. A. B. Davis and Elkins.



Laura Ann Miles, Assistant Librarian. A. B. Marshall College, B. S. in Library Science from Drexler Institute.



Rosa V. Oliver, Librarian. A. B. North Carolina College for Women.

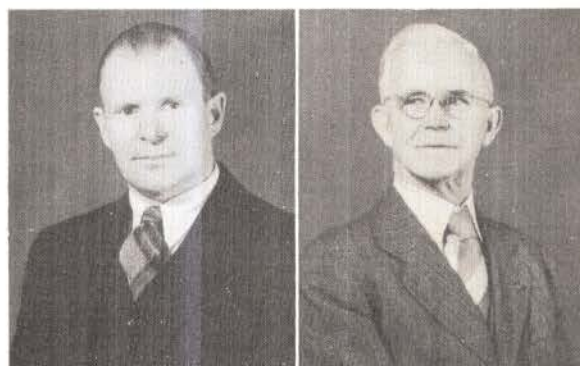
Bernice Amstutz, Assistant Librarian and Instructor in Library Science. A.B. Carnegie College, B. S. L. S. Carnegie Tech. American Library Association, West Virginia Library Association.



Margaret Seidel Bobbitt, Assistant Librarian. A. B. Wittenberg, B. S. L. S. Drexel Institute. American Library Association, West Virginia Library Association.

# FACULTY

Otto A. Gullickson, Physical Education Department. B. P. E. Springfield College, B. S. Columbia, M. A. Columbia University. Phi Delta Kappa. Director of Intramural Activities, Sponsor of Alpha Kappa Pi, Member of Student Activity Committee.



William Irvin Utterback, Zoology Department. B. S. Wabash College, M. A. University of Missouri. Triple A, Fellow in the American Association for the Advancement of Science, West Virginia Academy of Science. Director of Pre-Medic work. Author of: "The Second Triangle"; "Naiades of Missouri"; "History and Genealogy of the Utterback Family in America (1620-1928)."

Paul Musgrave, Principal of Marshall Laboratory High School. A. B. Salem, M. A. West Virginia University, Ph. D. West Virginia University. Kappa Delta Pi.



Joe Donald Pollitt, English Department. A. B. Marshall College, M. A. Duke University. Kappa Delta Pi.

F. A. Fitch, Physical Education and Health Departments. A. B. Marshall College, M. A. New York University.



William N. Lockwood, Geology Department. B. S. Princeton University, M. A. University of Buffalo. Paleontology Society.





Roy L. Straight, Assistant Coach for football. A.B. from Davis and Elkins.



Walter M. Dove, Department of Mathematics. A.B. from Marshall, M.S. from University of W. Va.



William V. Lombard, Departments of Mathematics and Engineering. B.S. from University of W. Va. Member: American Institute of Electrical Engineering.



D. Augustus W. Hayes, Department of Sociology. B.S. from University of Illinois. M.S. and Ph.D. from University of Wisconsin. Sponsor of 4-H Club and Sociology Club. Member: Alpha Zeta, Alpha Kappa Delta, Phi Gamma Mu, Acacia Fraternity. Books written: "Community Organization" 1921, "Rural Sociology", 1929.



Robert L. Britton, Department of Geography. A.B. from University of Oklahoma, M.A. from University of Chicago. Member: Chi Beta Phi, Sigma Xi.

Mrs. Frank N. Mann, Hostess of the Student Union.



John Frank Bartlett, Chemistry Department. A.B., M.A., Ph.D. degrees from West Virginia University. Advisor of Pre-medical students and of the Junior Class. Member of Phi Lambda Upsilon and Chi Beta Phi.



Lee Anthon Wolfard, Departments of Commerce and Economics. M.C.S. University of Denver. Member: Audit Committee, Religious Activities Committee. Sponsor of the Chamber of Commerce.



Albert LaVerne Olson, Department of Economics. A.B. degree from Augustana College, A.M. degree from Northwestern University, Ph.D. degree from Yale University. Member: American Economic Association, American Historic Association, American Association University Professors, Agricultural History Society, Committee on Athletics, Chairman to the Advisory Committee on the Student Union, Committee on Auditing. Name appears in *Who's Who in American Education*. Author of: "Agricultural Economy and the Population in 18th Century Connecticut." Yale University Press, 1935.



R. I. Roudebush, Department of Education. M.A. from Ohio State University. Advisor of Freshman Class. Member: College Council



Harry Mueller, Department of Music. New England Conservatory of Music, Boston, M. Mus. Degree from Cincinnati Conservatory of Music, Mus. D. Degree from Capitol Conservatory of Music. Sponsor of Marshall Band and Madrigal Club. Member: American Association of University Professors. and Alpha Psi Omega.

