

Summer 7-26-2008

# Mechanical Properties of Plant Underground Storage Organs and Implications for Dietary Models of Early Hominins

Nathaniel J. Dominy

Erin R. Vogel

Justin D. Yeakel

Paul J. Constantino

*Biological Sciences*, paulconstantino@gmail.com

Peter W. Lucas

Follow this and additional works at: [http://mds.marshall.edu/bio\\_sciences\\_faculty](http://mds.marshall.edu/bio_sciences_faculty)



Part of the [Biological and Physical Anthropology Commons](#), and the [Paleontology Commons](#)

---

## Recommended Citation

Dominy NJ, Vogel ER, Yeakel JD, Constantino P, and Lucas PW. The mechanical properties of plant underground storage organs and implications for the adaptive radiation and resource partitioning of early hominins. *Evolutionary Biology* 35(3): 159-175.

This Article is brought to you for free and open access by the Biological Sciences at Marshall Digital Scholar. It has been accepted for inclusion in Biological Sciences Faculty Research by an authorized administrator of Marshall Digital Scholar. For more information, please contact [zhangj@marshall.edu](mailto:zhangj@marshall.edu), [martj@marshall.edu](mailto:martj@marshall.edu).

# Mechanical Properties of Plant Underground Storage Organs and Implications for Dietary Models of Early Hominins

Nathaniel J. Dominy · Erin R. Vogel · Justin D. Yeakel ·  
Paul Constantino · Peter W. Lucas

Received: 16 April 2008 / Accepted: 15 May 2008 / Published online: 26 July 2008  
© Springer Science+Business Media, LLC 2008

**Abstract** The diet of early human ancestors has received renewed theoretical interest since the discovery of elevated  $\delta^{13}\text{C}$  values in the enamel of *Australopithecus africanus* and *Paranthropus robustus*. As a result, the hominin diet is hypothesized to have included  $\text{C}_4$  grass or the tissues of animals which themselves consumed  $\text{C}_4$  grass. On mechanical grounds, such a diet is incompatible with the dental morphology and dental microwear of early hominins. Most inferences, particularly for *Paranthropus*, favor a diet of hard or mechanically resistant foods. This discrepancy has invigorated the longstanding hypothesis that hominins consumed plant underground storage organs (USOs). Plant USOs are attractive candidate foods because many bulbous grasses and cormous sedges use  $\text{C}_4$  photosynthesis. Yet mechanical data for USOs—or any putative hominin food—are scarcely known. To fill this empirical void we measured the mechanical properties of USOs from

98 plant species from across sub-Saharan Africa. We found that rhizomes were the most resistant to deformation and fracture, followed by tubers, corms, and bulbs. An important result of this study is that corms exhibited low toughness values (mean =  $265.0 \text{ J m}^{-2}$ ) and relatively high Young's modulus values (mean = 4.9 MPa). This combination of properties fits many descriptions of the hominin diet as consisting of hard-brittle objects. When compared to corms, bulbs are tougher (mean =  $325.0 \text{ J m}^{-2}$ ) and less stiff (mean = 2.5 MPa). Again, this combination of traits resembles dietary inferences, especially for *Australopithecus*, which is predicted to have consumed soft-tough foods. Lastly, we observed the roasting behavior of Hadza hunter-gatherers and measured the effects of roasting on the toughness on undomesticated tubers. Our results support assumptions that roasting lessens the work of mastication, and, by inference, the cost of digestion. Together these findings provide the first mechanical basis for discussing the adaptive advantages of roasting tubers and the plausibility of USOs in the diet of early hominins.

N. J. Dominy (✉) · E. R. Vogel  
Department of Anthropology, University of California,  
1156 High Street, Santa Cruz, CA 95064, USA  
e-mail: njdominy@ucsc.edu

E. R. Vogel  
e-mail: evogel@ucsc.edu

N. J. Dominy · J. D. Yeakel  
Department of Ecology and Evolutionary Biology, University  
of California, 1156 High Street, Santa Cruz, CA 95064, USA  
e-mail: jyeakel@pmc.ucsc.edu

P. Constantino · P. W. Lucas  
Anthropology Department, The George Washington University,  
Hortense Amsterdam House, 2110 G Street, NW, Washington,  
DC 20052, USA  
e-mail: pcma@gwu.edu

P. W. Lucas  
e-mail: pwlucas@gwu.edu

**Keywords** *Australopithecus* · *Paranthropus* · Diet ·  
Hypogeous plant foods · Geophytes · Tubers ·  
Fracture toughness · Young's modulus

## Introduction

A severe drought on Daphne Major, Galápagos, in 1977 caused an 85% decline in a population of Darwin's finches, *Geospiza fortis*. The decline was correlated with a reduction in the abundance of seeds, the staple food of *G. fortis* during the dry season when insects and other plant matter are scarce. In 1977, during the normally lush wet

season, larger birds fed heavily on seeds extracted from the hard mericarps of *Tribulus cistoides* (Zygophyllaceae), a food ignored by almost all birds in earlier years. Selective mortality was weakest among larger birds, and subsequent generations possessed relatively larger beaks. This episode of intense natural selection on beak morphology was a signal event in the study of evolution. The resulting publications were among the first to demonstrate that adaptive radiations could result from periods of rapid selection (Boag and Grant 1981, 1984; Schluter and Grant 1984; Grant and Grant 2002). The authors were also among the first to quantify the hardness of natural food objects.

The seeds of *Tribulus cistoides* may be classified as a fallback food, i.e., an exigent resource that *Geospiza fortis* utilized when preferred foods were scarce (Marshall and Wrangham 2007). Since the pioneering research on Daphne Major 30 years ago, authors have emphasized the vital role of fallback foods in driving adaptive radiations. For instance, Kinzey and others have stressed the importance of obdurate fruit tissues in shaping the diversity of primate communities (Rosenberger and Kinzey 1976; Terborgh 1983; Kinzey and Norconk 1990, 1993; Lambert et al. 2004). These authors argued that the partitioning of food resources on the basis of mechanical properties is

expected to result in behavioral, ecological, and phenotypic adaptations. For example, hard-object feeding (durophagy) among distantly related species is linked to the parallel evolution of certain functional traits, such as robust jaws, large chewing muscles, and flat, thickly enameled molars that are pitted during life. The prominence of these same craniodental characteristics in the human clade has led to the widespread view that early hominins, *Paranthropus* in particular, chewed hard or mechanically resistant foods, perhaps during fallback episodes (Table 1).

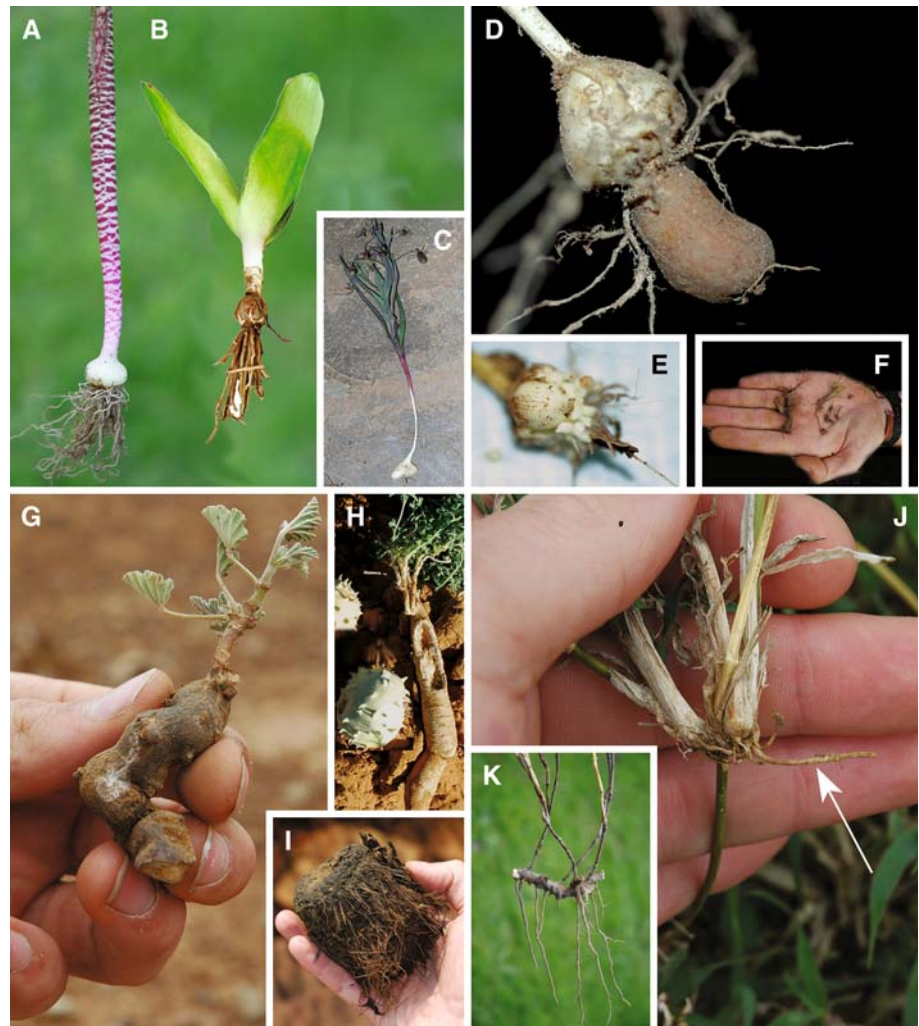
Candidate fallback foods for early hominins include seeds and plant underground storage organs (USOs). The evidence in support of USOs is based largely on ecological, morphological, and isotopic comparisons with living USO-consumers, notably baboons, bush pigs, and mole rats (Robinson 1954; Jolly 1970; Hatley and Kappelman 1980; Peters and O'Brien 1981; Conklin-Brittain et al. 2002; Laden and Wrangham 2005; Sponheimer et al. 2005a, b; Yeakel et al. 2007). Yet the plausibility of USOs as a fallback food depends in part on their physical properties, and quantitative data from USOs—or any putative food in the hominin diet—are scarcely known (Peters and Maguire 1981; Peters 1993). To fill this empirical void we surveyed the mechanical characteristics of USOs from across sub-Saharan Africa. We

**Table 1** Inferred physical characteristics of hominin diets

| Species                           | Mechanical characteristics of the diet   | Basis for inference  |
|-----------------------------------|--|--|
| <i>Ardipithecus ramidus</i>       | ...less tough and abrasive than the diet of <i>Australopithecus</i> ...  | Comparative morphology <sup>a</sup>  |
| <i>Australopithecus afarensis</i> | ...hard foods...<br>...harder, brittle fallback foods... (relative to early <i>Homo</i> )<br>...soft or tough foods...   | Dental microwear <sup>b</sup><br>Molar topography <sup>c</sup><br>Dental microwear <sup>d</sup>                                      |
| <i>Australopithecus africanus</i> | ...something very hard...<br>...a variably tougher diet than <i>P. robustus</i> ...  | Comparative morphology <sup>e</sup><br>Dental microwear <sup>f</sup>   |
| <i>Australopithecus anamensis</i> | ...hard-tough (rather than hard-brittle) foods...<br>...non-habitual consumption of tough foods, but a high proportion of fine abrasives rather than hard, brittle objects...  | Comparative morphology <sup>g</sup><br>Dental microwear <sup>h</sup>   |
| <i>Paranthropus boisei</i>        | ...foods that were small or hard and round in shape...<br>...unusually hard or tough food objects...<br>...foods with similar ranges of toughness as those consumed by <i>Australopithecus africanus</i> , but not harder and brittle than <i>P. robustus</i> ...  | Comparative morphology <sup>i</sup><br>Masticatory biomechanics <sup>j</sup><br>Dental microwear <sup>k</sup>                        |
| <i>Paranthropus robustus</i>      | ...small amounts of small abrasive food objects...<br>...substantially more hard food items than <i>Australopithecus africanus</i> ...<br>...hard, brittle foods were an occasional but important part of the diet...<br>...likely ate foods that were on average much harder and less tough than <i>P. boisei</i> ... | Model of mastication <sup>l</sup><br>Dental microwear <sup>m</sup><br>Dental microwear <sup>f</sup><br>Dental microwear <sup>k</sup> |
| Early <i>Homo</i>                 | ...tougher, elastic fallback foods... (relative to <i>Australopithecus afarensis</i> )<br>...neither extremely hard nor exceedingly tough foods...   | Molar topography <sup>c</sup><br>Dental microwear <sup>n</sup>   |
| <i>Homo erectus</i>               | ... less capable of crushing hard objects but better able to shear tougher foods than <i>Homo rudolfensis</i> , <i>Homo habilis</i> , and earlier hominins...  | Literature review <sup>o</sup>   |
| 'Basal hominid'                   | ...small, solid, spherical, and hard...  | Comparative ecology <sup>p</sup>   |

<sup>a</sup> White et al. 2006; <sup>b</sup> Ryan and Johanson 1989; <sup>c</sup> Ungar 2004; <sup>d</sup> Grine et al. 2006b; <sup>e</sup> Kay 1985; <sup>f</sup> Scott et al. 2005; <sup>g</sup> Macho et al. 2005; <sup>h</sup> Grine et al. 2006a; <sup>i</sup> Demes and Creel 1988; <sup>j</sup> Hylander 1988; <sup>k</sup> Ungar et al. 2008; <sup>l</sup> Lucas et al. 1985; <sup>m</sup> Grine and Kay 1988; <sup>n</sup> Ungar et al. 2006a; <sup>o</sup> Ungar et al. 2006b; <sup>p</sup> Jolly 1970

**Fig. 1** The diverse morphology of plant underground storage organs. (a) Bulb of *Lachenalia unifolia* (Hyacinthaceae). (b) Bulb of *Drimia capensis* (Hyacinthaceae). (c) Bulb of *Ornithogalum viride* (Hyacinthaceae). (d) Perennating corms of *Hesperantha falcata* (Iridaceae). (e) Corm and cormels of *Sparaxis bulbifera* (Iridaceae). (f) Corms of *Cyperus cristatus* (Cyperaceae); we observed olive baboons (*Papio anubis*) peeling the tunics and consuming the parenchymatous tissue of this species. (g) Tuber of *Monsonia longipes* (Geraniaceae). (h) Tuber and fruit of *Acanthosicyos naudinianus* (Cucurbitaceae); the tuber is partially eaten by the Damaraland mole rat (*Cryptomys damarensis*). (i) Tuber of *Hypoxis hemerocallidea* (Hypoxidaceae). (j) Rhizome of *Cynodon dactylon* (Poaceae). (k) Rhizome of *Willdenowia incurvata* (Restionaceae)



present the data here and contextualize the concept of food hardness by comparing our results to foods in the diets of chimpanzees (*Pan troglodytes*) and orangutans (*Pongo pygmaeus*). Such a comparative framework is instructive for testing evolutionary hypotheses. On the basis of dental morphology, the australopithecine diet is predicted to have been similar mechanically to the diet of orangutans and substantially harder—at least seasonally—than the diet of chimpanzees (Walker 1981; Kay 1985; Demes and Creel 1988; Vogel et al. 2008).

We also consider the effects of human processing behaviors. The importance of tubers in the diet of early *Homo* is a subject of considerable theoretical attention (O’Connell et al. 1999, 2002). For instance, Wrangham et al. suggested that the technical capacity to roast meat and tubers was a contributing factor to the emergence and spread of *Homo erectus* (Wrangham et al. 1999; Wrangham and Conklin-Brittain 2003). The authors hypothesized that roasting behavior conferred a selective advantage to early *Homo* because it softened the starchy

parenchymatous tissues of tubers and improved chewing and digestive efficiency. Although corroborating archaeological evidence is scant, roasting behavior may have facilitated the increased encephalization, larger body size, and reduced masticatory complex of early *Homo* (Wrangham et al. 1999). To test an underlying assumption of the hypothesis—that roasting behavior affects tuber fracture properties—we conducted a pilot field study of tubers roasted by Hadza hunter-gatherers in northern Tanzania; the results are presented here.

## Methods

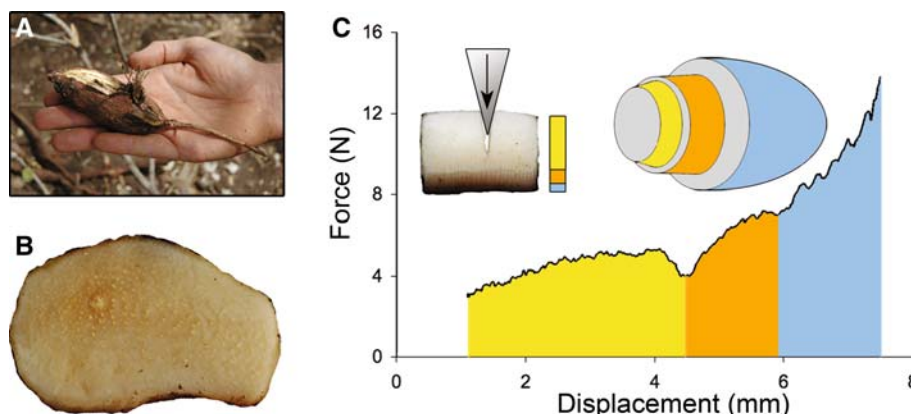
### Classification and Collection of Plant USOs

Plant USOs are starchy geophytic structures such as bulbs, corms, rhizomes, and tubers. They function to retain water and carbohydrates during unfavorable periods for plant growth. They are commonly associated with petaloid

monocots in relatively arid, Mediterranean-like ecosystems, although they are present in some dicots and habitats throughout the world. With >2,000 species, the alpha diversity of USOs is highest in South Africa. Nearly 40% of monocots in the Cape floristic region possess USOs (Procheş et al. 2006). In the Upper Karoo of South Africa, the bulb and tuber biomass of four human-edible species averages 115 MT ha<sup>-1</sup> (Youngblood 2004). Specific diversity is lower in East African savannas, but the biomass of just one tuber species can exceed 50 MT ha<sup>-1</sup> (Vincent 1985a).

We classified USO structures according to the definitions of Pate and Dixon (1982) or the descriptions of Manning et al. (2002). The classification of USOs frequently, though not invariably, follows taxonomic lines. Bulbs are the modified shoots of a vertically compacted stem with overlapping swollen scales (Fig. 1a–c). Corms are swollen, compacted underground stems. They are almost always vertical and never possess scales (Fig. 1d–f). Tubers are uniformly thickened perennial roots or irregular swellings on portions of the branched root system and/or adventitious roots (Fig. 1g–i). Rhizomes are horizontal underground stems that can produce roots and shoots from nodes; they are also known as rootstalks or creeping rootstalks (Fig. 1j–k).

Despite such morphological variation, the parenchymatous tissues of all USOs possess starch grains, which are a food resource for herbivores, including humans, throughout sub-Saharan Africa (Hladik et al. 1984; Malaisse and Parent 1985; Vincent 1985a; Campbell 1986; Peters 1990, 1994, 1996; Peters et al. 1992). To estimate variation in the mechanical properties of USOs, we sampled plants from diverse habitats and clades. The samples were collected with a digging stick, trowel, or shovel and the aid of local informants or staff at a variety of research facilities.



**Fig. 2** Our protocol for collecting, sectioning, and wedging tubers. (a) The tough peridermal and cortical tissues of the shumako tuber (*Vatovaea pseudolablab*; Fabaceae). (b) Transverse section and parenchymatous tissue of the matukwaiko tuber (*Coccinea aurantiaca*; Cucurbitaceae). (c) A wedged, rectilinear specimen of the

## Study Locations

### East Africa

In July 2005, we sampled USOs from the Mpala Research Centre, Laikipia District, Kenya (0°6'N, 37°2'E). The area is a semiarid bushland and savanna used for commercial ranching, subsistence pastoralism, tourism, and small-scale agriculture. The climate is seasonal with ca. 500 mm of rainfall year<sup>-1</sup>, occurring typically in April–July and October–November. *Cyperus* corms (Cyperaceae) are a major fallback food for *Papio anubis* in Laikipia and *Papio cynocephalus* in southern Kenya (Barton 1993; Altmann 1998; Fig. 1f). Plant taxonomy follows Agnew and Agnew (1994).

We also sampled tubers from the vicinity of Lake Eyasi and the agricultural settlement of Mangola, northern Tanzania (3°25'S, 35°25'E). The habitat is savanna woodland with ca. 500 mm of rainfall year<sup>-1</sup>, occurring mostly in November–April. The tubers of *Vigna* spp. (Fabaceae) in the region are a key food resource for Hadza hunter-gatherers. The Hadza subsist by gathering tubers, fruit, and honey and by hunting or scavenging medium- to large-sized game (Tomita 1966; Woodburn 1968; Vincent 1985a; O'Connell et al. 1988; Marlowe 2002). Plant taxonomy and Hadza nomenclature follows Vincent (1985b).

### Southern Africa

In August 2005, we sampled USOs from the field camp of the Henry Oppenheimer Okavango Research Center, Chief's Island, Nxaraga Lagoon area, Botswana (19°24'S, 23°10'E). The area is an alluvial fan of the Okavango River; it consists of permanent and semi-permanent swamps, channels, and islands with a diversity of vegetation types (McCarthy and

penzepeze tuber (*Vigna* sp. A; Fabaceae) with discrete parenchymatous (yellow), cortical (orange), and peridermal (blue) tissues. The forces (N) required to direct a crack through each tissue differed; hence, the work of fracture (J m<sup>-2</sup>) differed

Ellery 1998; Bonyongo et al. 2000). The climate is semi-arid with ca. 500 mm of rainfall year<sup>-1</sup>, occurring mostly in December–April. The corms of *Cyperus* (Cyperaceae) and tubers of *Nymphaea* (Nymphaeaceae) are a vital food for chacma baboons (*Papio ursinus*) and humans in the region (Hamilton et al. 1978; Campbell 1986). The habitat and its plant foods have also been invoked in an ecological model of hominin origins (Wrangham 2005). Plant taxonomy follows Ellery and Ellery (1997).

In August 2005 and 2006, we sampled USOs from the Western and Northern Cape Provinces of South Africa, a region of celebrated geophyte diversity (Goldblatt and Manning 2002; Procheş et al. 2005, 2006). A majority of our data was obtained from Wayland's Farm, Darling (33°S, 18°E) and private lands outside of Kamieskroon (30°S, 18°E). The vegetation of Wayland's Farm is classified as sand plain fynbos; it is exposed to rotational grazing by sheep and cattle, but it has been uncultivated for 100 years (Lovegrove and Jarvis 1986). The climate of Wayland's Farm is semi-arid with ca. 600 mm of rainfall year<sup>-1</sup>, occurring mostly in April–August. Plant taxonomy follows Mason (1972) and Manning et al. (2002). Kamieskroon is in the Namaqualand winter-rainfall desert; the vegetation is classified as lowland succulent Karoo (Cowling et al. 1999). The climate is arid with ca. 150 mm of rainfall year<sup>-1</sup>, although it can vary from 50 to 400 mm year<sup>-1</sup>. Plant taxonomy follows Le Roux (2005).

### Miscellaneous Samples

To supplement our data set, we collected the tubers of *Acanthosicyos naudinianus* and *Cucumis africanus* (Cucurbitaceae) in Hotazel (27°S, 23°E) and four specimens in the Drakensberg Mountains, Kwa-Zulu Natal Province (29°S, 29°E). *Papio ursinus* devotes 98% of dry-season foraging time to consuming corms and bulbs in the Drakensberg Mountains (Whiten et al. 1987). We also purchased a small subset of specimens from commercial trading centers, such as street markets or traditional healing shops. We omitted dried USOs from our analysis. Finally, we tested a tuber of *Dioscorea* sp. (Dioscoreaceae) from the lowland rain forest of Korup National Park, Cameroon.

### Mechanical Measurements

We used a portable universal tester to estimate the Young's modulus and fracture toughness of plant tissues (Darvell et al. 1996). For all USO structures, radial samples of the edible parenchymatous tissue were cut orthogonal to the outer surface and shaped with a 4-mm cork borer into right cylinders, ca. 5 mm high. The Young's modulus,  $E$ , of a tissue was determined from tests on short cylinders in compression (Lucas et al. 2001; Lucas 2004). The fracture toughness,  $R$ , was determined with a 15°-angle wedge driven into a rectilinear-shaped

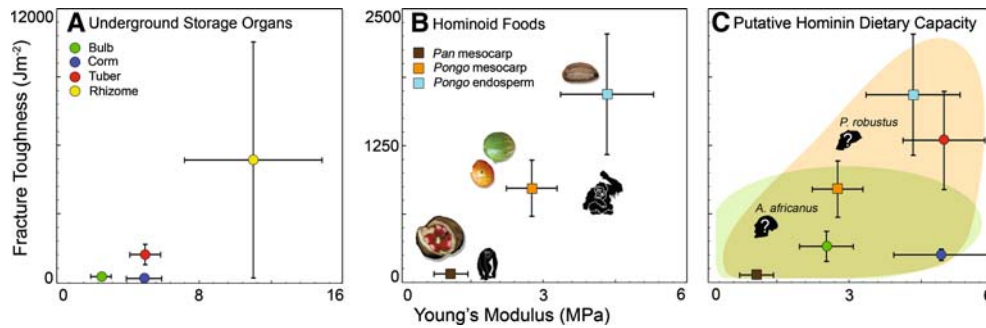
**Table 2** The fracture toughness,  $R$  (J m<sup>-2</sup>), and Young's modulus,  $E$  (MPa) of USOs and fruit tissues in the diets of *Pan troglodytes* and *Pongo pygmaeus*

| Plant tissue           | N-species |     | Mean                 |                   | SE     |     | Lower 95% CI |     | Upper 95% CI |      |
|------------------------|-----------|-----|----------------------|-------------------|--------|-----|--------------|-----|--------------|------|
|                        | $R$       | $E$ | $R$                  | $E$               | $R$    | $E$ | $R$          | $E$ | $R$          | $E$  |
| USO                    |           |     |                      |                   |        |     |              |     |              |      |
| Bulb                   | 32        | 31  | 325.0 <sup>A</sup>   | 2.5 <sup>V</sup>  | 70.0   | 0.3 | 199.0        | 1.9 | 486.0        | 3.1  |
| Corm                   | 24        | 24  | 265.0 <sup>A</sup>   | 4.9 <sup>W</sup>  | 26.0   | 0.5 | 212.0        | 3.9 | 319.0        | 5.9  |
| Rhizome                | 9         | 8   | 5448.0 <sup>B</sup>  | 11.0 <sup>X</sup> | 2638.0 | 2.0 | 636.0        | 6.4 | 11531.0      | 15.7 |
| Tuber                  | 33        | 30  | 1304.0 <sup>C</sup>  | 5.0 <sup>W</sup>  | 228.0  | 0.4 | 841.0        | 4.1 | 1768.0       | 5.9  |
| <i>Pan</i> fruit       |           |     |                      |                   |        |     |              |     |              |      |
| Mesocarp               | 12        | 11  | 81.0 <sup>D</sup>    | 1.0 <sup>Y</sup>  | 20.0   | 0.4 | 38.0         | 0.2 | 1234.0       | 1.8  |
| <i>Pongo</i> fruit     |           |     |                      |                   |        |     |              |     |              |      |
| Mesocarp               | 36        | 36  | 862.0 <sup>C</sup>   | 2.7 <sup>VZ</sup> | 130.0  | 0.3 | 598.0        | 2.2 | 1126.0       | 3.3  |
| Endosperm <sup>a</sup> | 24        | 13  | 1719.0 <sup>BC</sup> | 4.3 <sup>WZ</sup> | 281.0  | 0.5 | 1138.0       | 3.2 | 2299.0       | 5.4  |

N.B. orangutans occasionally consumed the bulbs of arboreal orchids, e.g., *Bulbophyllum* spp. with a fracture toughness of 270 and 726 J m<sup>-2</sup> ( $n = 2$  species; unpublished data)

Mean values unconnected by the same letter differ significantly

<sup>a</sup> The endosperm is the nutritive tissue within the protective endocarp or seed wall. The mechanical properties of a seed are therefore governed by the woody endocarp. We report the combined values of endocarp and endosperm here because the properties of both tissues are expected to exert a selective pressure on molar morphology. We use the term endosperm to convey the food tissue that orangutans appear to be selecting during foraging



**Fig. 3** Comparative mechanical data. (a) The parenchymatous tissue of USO forms. (b) The tissues of fruits in the diets of chimpanzees (*Pan troglodytes*) and orangutans (*Pongo pygmaeus*); data redrawn

from Vogel et al. (2008). (c) Overlapping data sets illustrate the mechanical similarities of some plant tissues. The hominin icons illustrate our model of USO partitioning during fallback episodes

specimen (Fig. 2). The  $R$  of discrete tissues was calculated by dividing the area beneath the force-deformation curve by the product of crack depth (i.e. wedge displacement) and initial specimen width (Fig. 2c). To account for anisotropic variation, we took a minimum of two measurements and averaged them.

### Roasting Protocol

Hadza men used commercial matches to ignite a traditional fire (cf. Woodburn 1970, pp. 36–37). Next, they positioned each tuber in the center of the fire at the base of the flames, turning it two to three times during the roasting process. We classified a tuber as roasted when our Hadza informants perceived it as optimal for consumption. We timed each roasting event and estimated the fire temperature with a Raynger MX2 TD infrared thermometer (distance 1 m; emissivity setting 0.94; Raytek, Santa Cruz, CA, USA). We subdivided each tuber for mechanical analysis: a portion was analyzed raw (control condition) or roasted (experimental condition). This observational protocol was approved as exempt from oversight by the Institutional Review Board of the University of California Santa Cruz (no. 819).

### Data Analyses

We used a Wilcoxon Signed-Rank test to determine if statistically significant variation exists among USO structures

and foods in the diets of chimpanzees and orangutans (Vogel et al. 2008). Next, we used a Tukey–Kramer HSD test for multiple comparisons to determine which plant tissues differed. For all analyses, we averaged  $E$ - and  $R$ -values by plant species and in some cases plant part. All data were natural log transformed. When we compared mean values, we report the mean  $\pm$  SE unless otherwise noted. All statistical procedures were performed with the statistical software JMP-SAS 6.0.3. All probability levels are two-tailed, and the significance of tests was set at  $\alpha \leq 0.05$ .

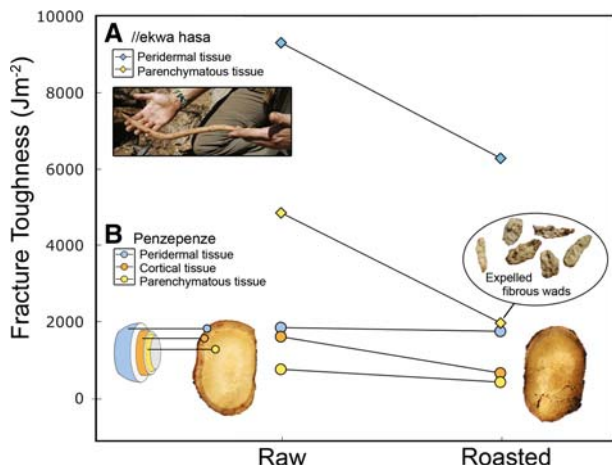
## Results

### Mechanical Properties of USOs

We sampled the USOs of 98 plant species (Appendix) and found significant variation in the Young's modulus (Wilcoxon Signed Rank test  $\chi^2 = 31.95$ ,  $df = 3$ ,  $P < 0.0001$ ). Rhizomes were more resistant to deformation than all other forms, and corms and tubers were harder than bulbs (Tukey–Kramer HSD  $q = 2.62$ ,  $P < 0.05$ ; Table 2; Fig. 3a). A similar pattern emerged when we considered the fracture toughness of USOs (Wilcoxon Signed Rank test  $\chi^2 = 42.07$ ,  $df = 3$ ,  $P < 0.0001$ ). Rhizomes were tougher than all other forms, and tubers were tougher than bulbs and corms (Tukey–Kramer HSD  $q = 2.62$ ,  $P < 0.05$ ; Table 2; Fig. 3a).

**Table 3** The effect of Hadza roasting behavior on the fracture toughness of tubers

| Species                      | Hadza name  | Fracture toughness ( $\text{J m}^{-2}$ ) |         |                       |         |
|------------------------------|-------------|--|---------|-----------------------|---------|
|                              |             | Peridermal tissue                        |         | Parenchymatous tissue |         |
|                              |             | Raw                                      | Roasted | Raw                   | Roasted |
| <i>Coccinea aurantiaca</i>   | matukwaiko  |  |         | 666.0                 | 399.0   |
| <i>Vatovaea pseudolablab</i> | shumako     | 1767.0                                   | 1322.0  | 300.0                 | 138.0   |
| <i>Vigna frutescens</i>      | //ekwa hasa | 9317.0                                   | 6288.0  | 4859.0                | 1977.0  |
| <i>Vigna macrorhyncha</i>    | do'aiko     |  |         | 659.0                 | 356.0   |
| <i>Vigna</i> sp. A           | penzepeze   | 1855.0                                   | 1753.0  | 762.0                 | 426.0   |



**Fig. 4** The effect of roasting //ekwa hasa (*Vigna frutescens*) and penzepepe (*Vigna* sp. A) tubers. We observed that the parenchymatous tissue of //ekwa hasa was not swallowed by the Hadza after roasting; the tissue was processed orally and expelled. The cortical tissue of penzepepe exhibited disproportionately large changes in fracture toughness. Such changes permitted manual peeling of the peridermal and cortical tissues without the aid of a tool

To contextualize these results, we compared USOs to fruit tissues in the diets of chimpanzees and orangutans (Fig. 3b). Again, we found that the Young's modulus,  $E$ , and fracture toughness,  $R$ , of plant tissues differed ( $E$ :  $\chi^2 = 58.60$ ,  $df = 6$ ,  $P < 0.0001$ ;  $R$ :  $\chi^2 = 78.49$ ,  $df = 6$ ,  $P < 0.0001$ ). Rhizome tissues were the most resistant to deformation and fracture whereas fruit mesocarp in the diet of chimpanzees was the least resistant to deformation and fracture (Tukey–Kramer HSD,  $q = 2.99$ ,  $P < 0.05$ ; Table 2). Seeds consumed by Bornean orangutans tended to resemble tubers mechanically (Fig. 3c).

#### Effects of Roasting on Tuber Mechanical Properties

On average, the Hadza perceived a tuber as optimally edible after just 2 min of roasting (range 75–320 s). The temperature of the fire ranged from 700 to 900°C. Ethnographic accounts characterize such behavior as light roasting (Tomita 1966; Woodburn 1968); larger tubers may be roasted 5–30 min (O'Connell et al. 1999; Schoeninger et al. 2001). Overall, the edible parenchymatous tissue was less resistant to fracture after roasting (Wilcoxon Matched-Pairs Signed-Ranks Test,  $P = 0.03$ ; Table 3). The tuber of //ekwa hasa (*Vigna frutescens*) was substantially more resistant to fracture than the other species (Table 3). We observed that the roasted parenchymatous tissue of //ekwa hasa was never fractured by the Hadza during chewing. In contrast to all other tubers, the Hadza subjected //ekwa hasa to mastication and salivary softening before they expelled a fibrous wad (Fig. 4; or quid *sensu* Schoeninger et al. 2001). Lastly, roasting had a disproportionately large

effect on the toughness of the cortical tissue of penzepepe (*Vigna* sp. A; Fig. 4). This change appeared to facilitate expedient manual peeling. Unroasted penzepepe tubers were accessible only with the aid of a tool.

#### Discussion

“It would seem important to distinguish types of [underground] storage organs in discussing their potential as food sources for early hominids”

(Stahl 1984, p. 156)

Stahl was prescient. We have examined the USOs of 98 plant species and found that they differ mechanically. Rhizomes were the most resistant to deformation and fracture, followed by tubers, corms, and bulbs. This result is consistent with an earlier study of two South African species. Peters and Maguire (1981) reported that the puncture resistance of *Kirkia wilmsii* tubers was two to nine times greater than *Cyperus usitatus* bulbs. We also examined the effect of Hadza roasting behavior on five tuber species. Our results support the assumption that roasting tubers lessens the mechanical challenges of mastication, and, by inference, starch digestion. Together these findings fill an important empirical void and provide a mechanical basis for discussing the plausibility of USOs as a food source for early hominins.

With an average toughness of 5448.0 J m<sup>-2</sup>, the work of fracturing rhizomes exceeds nearly all food tissues in the diets of great apes (Elgart-Berry 2004; Vogel et al. 2008). In Tuanan, Indonesia, the cambium and phloem tissues of several tree species were the toughest foods in the diet of *Pongo pygmaeus* (range 1276.0–3432.0 J m<sup>-2</sup>). The orangutans devoted up to 23.0% of monthly foraging time to chewing, wadging, and expelling these tissues, and dependence was greatest during episodes of low fruit availability (Vogel et al. 2008). For *Pan troglodytes*, the pith of terrestrial herbaceous vegetation can be a similar fallback food (Wrangham et al. 1991, 1993), yet chimpanzees rarely ingest tissues as tough as those consumed by orangutans. During 58 h of observation in Kibale National Park, Uganda, we witnessed chimpanzees chewing and wadging exceptionally tough tissues only twice (*Ficus natalensis* bark = 2170.0 J m<sup>-2</sup> and *Marantochloa leucantha* pith = 4223.0 J m<sup>-2</sup>). Such a pattern of behavior may be instructive for assessing the plausibility of rhizomes in the diets of early hominins, particularly when combined with other lines of evidence.

For instance, stable isotope data point to the importance of C<sub>4</sub>-derived tissues in the hominin diet. According to some estimates, such tissues represented 40% or more of the diets of *Australopithecus africanus*, *Paranthropus*



*robustus*, and early *Homo* (Sponheimer and Lee-Thorp 1999; Sponheimer et al. 2005b; van der Merwe et al. 2003). Our finding that common C<sub>4</sub>-grasses such as *Cynodon dactylon* have tough rhizomes (3770.0 J m<sup>-2</sup>) raises the possibility that a diet of rhizomes contributed to the C<sub>4</sub> signal of some hominins and favored the evolution of large teeth and chewing muscles. The relatively immense bite force of *Paranthropus boisei* is consistent with this hypothesis (Demes and Creel 1988); however, our observations of apes and humans suggest that such tough tissues would have been chewed, wadged, and ejected from the mouth. These behaviors were unlikely to have resulted in a strong C<sub>4</sub> signal and we suggest that rhizomes were improbable or rare fallback foods for early hominins. The relatively untough rhizomes of aquatic plants such as *Nymphaea lotus* (Nymphaeaceae) and *Phragmites australis* (Poaceae) are an exception. The rhizomes of these particular plants—and perhaps some grasses (cf. Altmann and Altmann 1970)—should be considered candidate foods for hominins (Wrangham 2005).

Tubers are more plausible hominin foods. With an average fracture toughness of 1304.0 J m<sup>-2</sup> and a Young's modulus of 5.0 MPa, tubers match some of the inferred physical properties in Table 1. A broad mechanical resemblance between tubers and fruit tissues (mesocarp and seeds) in the diet of orangutans suggests that the craniodental morphology of *Pongo*—and by extension *Australopithecus* and *Paranthropus* (Walker 1981; Kay 1985; Demes and Creel 1988; Vogel et al. 2008)—is adequate biomechanically to chew tubers. In fact, some leguminous and liliaceous tubers were especially compliant. Recent reports of chimpanzees using tools and teeth to extract, wedge, and expel the parenchymatous tissue of tubers further supports their potential as a food source for early hominins (Lanjouw 2002; Hernandez-Aguilar et al. 2007). However, tuberous plants seldom use the C<sub>4</sub> photosynthetic pathway (Sage and Monson 1999). It is therefore unsurprising that the hair of occasional tuber-consuming chimpanzees from Ugalla, Tanzania, and bone of tuber-specialist mole rats is devoid of a C<sub>4</sub> signal (Schoeninger et al. 1999; Yeakel et al. 2007). Such findings do not rule out tubers from the australopithecine diet, but they do suggest that other tissues contributed to the C<sub>4</sub> isotopic signal of early hominins.

An important result of this study is that corms exhibit low toughness values (265.0 J m<sup>-2</sup>) and relatively high Young's modulus values (4.9 MPa). This combination of mechanical properties matches many descriptions of the hominin diet as consisting of “small, hard, brittle” objects (Table 1). When compared to corms, bulbs are tougher (325.0 J m<sup>-2</sup>) and more elastic (2.5 MPa). Again, this combination of traits resembles dietary

inferences, especially those for *Australopithecus*. For instance, Macho et al. (2005, p. 318) suggested that the diet of *Australopithecus anamensis* was “variably hard-tough rather than hard-brittle”. Similarly, the diet of *Australopithecus afarensis* and *Australopithecus africanus* is predicted to have been relatively tough (Scott et al. 2005; Grine et al. 2006b). In general, our mechanical data for bulbs and corms fit most authors' expectations for the physical properties of hominin foods.

### Comparisons with *Pan* and *Pongo*

“It has always been difficult to understand why man should show so many curious and detailed anatomic agreements with the orangs, in spite of the enormous differences in locomotor habits”

(Gregory and Hellman 1939, p. 564)

To contextualize these results, we compared the present data set to foods in the diets of chimpanzees and orangutans. Bulbs are less elastic (harder) and substantially tougher than fruit in the diet of chimpanzees. Corms are harder still, but comparable to most seeds in the diet of orangutans (Fig. 3). These findings delimit the concept of ‘hard-object feeding’ and demonstrate a quantitative resemblance between the diet of *Pongo* and putative hominin foods. More than two decades ago, Walker (1981) and Kay (1985) predicted that the australopithecine diet would be similar mechanically to the diet of orangutans but substantially harder than the diet of chimpanzees. Our results support these expectations. Of course, similar patterns of dental morphology and microwear might also reflect the functional demands of sclerocarpic harvesting (sensu Kinzey and Norconk 1990) or seed-eating in particular (Jolly 1970; Peters 1987, 1993). The overall importance of seeds in the diet of early hominins is difficult to estimate. Seeds are a seasonal resource for many primate species and so a special role in driving the adaptive radiation of early hominins is unclear. Furthermore, seeds do little to resolve the C<sub>4</sub> conundrum that complicates our current understanding of hominin diets (Sponheimer and Lee-Thorp 2003; Peters and Vogel 2005).

### Corms, Bulbs, and the C<sub>4</sub> Conundrum

“The capacity to use C<sub>4</sub> foods may be a basal character of our lineage. We do not know, however,

which of the nutritionally disparate  $C_4$  foods were utilized by hominids”

(Sponheimer and Lee-Thorp 2003, p. 27)

The  $C_4$  conundrum refers to the discrepancy between dietary inferences based on stable isotopes (40% diet of  $C_4$ -grass or meat) and craniodental traits (seasonal or staple diet of small, hard, abrasive foods) (Teaford and Ungar 2000). Most functional morphologists view the blunt molar cusps and thick enamel of hominins as a poor adaptation to a diet with significant levels of grass or raw meat. Notwithstanding the challenge of acquiring meat regularly, uncooked meat is relatively tough and difficult to chew efficiently (Lucas and Peters 2000; Wrangham and Conklin-Brittain 2003). Sponheimer and Lee-Thorp (2003) called attention to this discrepancy, termed the  $C_4$  conundrum, and attempted to resolve it by suggesting a mechanically mixed diet with  $C_4$  input from termites, sedges, and plant USOs (Sponheimer et al. 2005a, b; Lee-Thorp and Sponheimer 2006). Our results are germane to this discussion because they frame the types of plausible USOs.

A dietary emphasis on corms and bulbs may resolve the  $C_4$  conundrum for three reasons. First, we have shown that corms and bulbs fit the expected mechanical properties of hominin foods. They are also gritty and therefore a potential cause of the extreme wear observed on many hominin teeth—exogenous grit is uncharacteristic of most seeds. Further, the seasonal consumption of corms can result in a *Paranthropus*-like microwear pattern among chacma baboons (Daegling and Grine 1999).

Second, bulbous grasses (e.g. *Alloteropsis* spp.) and cormous sedges tend to use the  $C_4$  photosynthetic pathway. Although  $C_4$  photosynthesis is rare among bulb- and corm-bearing species in winter rainfall regions such as the Western Cape (Sealy 1986; Rundel et al. 1999), it is common over much of eastern and southern Africa (Sage and Monson 1999; Codron et al. 2005). In Kenya, 65% of sedges use  $C_4$  photosynthesis (Hesla et al. 1982). In another survey, Stock et al. (2004) reported  $C_4$  photosynthesis in 20–67% of sedges across northeast South Africa. In the same region Yeakel et al. (2007) examined the isotopic ecology of *Cryptomys*, a mole rat that consumes corms and bulbs nearly exclusively. They found that modern and Plio-Pleistocene (1.7 Ma) species exhibited  $\delta^{13}\text{C}$  and  $\delta^{18}\text{O}$  values that did not differ statistically from *Australopithecus africanus* or *Paranthropus robustus*. Similarly, Sillen et al. (1995) and Sponheimer et al. (2005a) called attention to the unusual combination of elevated Sr/Ca and low Ba/Ca values that *Cryptomys* shares with South African hominins. These findings demonstrate that a diet of corms and bulbs can yield a hominin-like isotopic signal.

Third, corms and bulbs are a widespread, low-fiber source of carbohydrates for which there is relatively little competition from herbivores (Conklin-Brittain et al. 2002; Laden and Wrangham 2005). For instance, iridaceous corms are an exceedingly rich source of starch ( $\leq 80\%$  dry mass; Orthen 2001) that human foragers are known to have gathered since the Late Pleistocene (Deacon 1976, 1995; Campbell 1986). In the Upper Karoo of South Africa, edible *Cyperus* and *Albucca* bulbs are prolific, with average biomasses of 7.8 and 28.0 tons  $\text{ha}^{-1}$ , respectively (Youngblood 2004). The combined weight of this evidence suggests that corms and bulbs would have been attractive foods for early hominins (Coursey 1973, Hatley and Kappelman 1980; Laden and Wrangham 2005). If we accept this contention, an outcome of this study is a revised model of resource partitioning.

### Fallback Foods, USOs, and a Case for Resource Partitioning

“A hungry man does not say a coconut is too hard”  
Cameroonian proverb

On the balance, the dental morphology, masticatory biomechanics, dental microwear, and stable isotope ratios of *Australopithecus* and *Paranthropus* suggest a generalized and overlapping diet (Teaford and Ungar 2000; Scott et al. 2005). As a result, there is a growing tendency to view the adaptive radiation of early hominins as the result of competition for divergent fallback foods (Ungar 2007). A differential reliance on USOs fits this model. For *Australopithecus*, the evidence indicates a fallback diet that was relatively tough and elastic—a combination of traits that characterizes bulbs (and to a lesser extent corms). For *Paranthropus*, the evidence indicates a fallback diet that was hard and brittle—a combination of traits that characterizes corms (and to a lesser extent tubers). Although tubers are also relatively tough, *Paranthropus* could probably fracture them (Demes and Creel 1988; Hylander 1988; cf. Wright 2005). Such hypothetical partitioning predicts the broad eurytopy of *Paranthropus* (Fig. 3c), but it contrasts with Robinson’s (1954) influential Dietary Hypothesis, which emphasized the dietary specialization (stenotopy) of *Paranthropus*. Although both models are compatible with strong positive selection for craniodental robustness (Ackermann and Cheverud 2004), we suggest that a diet of corms and tubers most plausibly supports current evidence of scramble competition for obdurate, ubiquitous,  $C_4$  foods amid relatively open

habitats (Reed 1997; Wood and Strait 2004; Lockwood et al. 2007; Wood and Constantino 2007).

### The Advantages of Roasting Tubers

“By softening food and reducing meal size, cooking can be expected to reduce the cost of digestion... Exactly how these benefits translate into fitness has not been well established”

(Wrangham 2007, p. 310)

Undomesticated tubers are generally too fracture-resistant for human consumption (mean =  $1304.0 \text{ J m}^{-2}$ ). A raw carrot is relatively untough by comparison ( $440.0 \text{ J m}^{-2}$ , Lucas 2004). We found that a mere 90 s of roasting resulted in large changes in tuber fracture properties. Among the five species we studied, roasting reduced the work of fracture by an average of 49% (range 40–59%). Although these data are few, they support the assumption that roasting reduces the mechanical challenge of chewing and digesting undomesticated tubers (Wrangham et al. 1999; Wrangham and Conklin-Brittain 2003). Given that Hadza women obtain 39% of their daily kcal from tubers (Marlowe 2003), a 49% reduction in chewing cost is expected to result in a significant energy gain and improved fitness. These changes alone support the adaptive advantages of cooking, but we also observed more subtle advantages.

We observed that roasting had a disproportionately large effect on the cortical tissue of penzepeze tubers (*Vigna* sp. A; Fig. 4). Roasting permitted the manual peeling of the peridermis, a tissue that is removed with a tool when the tuber is consumed raw. We suggest that an additional advantage of roasting tubers is that it speeds entry to edible tissues without the aid of tools. Such access is expected to reduce total processing costs and improve foraging efficiency, particularly for women and dependant children. Rapid roasting frees women from tuber preparation that children can perform for themselves (cf. Woodburn 1966).

Roasting also increases dietary breadth by allowing access to foods of marginal quality (Stahl 1984). For instance, with a toughness of  $4859 \text{ J m}^{-2}$  the edible tissue of //ekwa hasa (*Vigna frutescens*) surpasses nearly all foods in the diets of chimpanzees and orangutans (Vogel et al. 2008). After roasting, the toughness of the parenchymatous tissue was reduced to  $1977.0 \text{ J m}^{-2}$ . Such a value is still too excessive for fracture by human molars, and we observed that the Hadza wadged and expelled the unfractured bolus of tissue (Fig. 4). In this case, roasting

softened the tuber sufficiently to permit molar occlusion, but any nutritional benefit depended on the digestive action of salivary amylase. Amylase is the sole enzyme responsible for starch hydrolysis and copy number variation of the salivary amylase gene, *AMY1*, has experienced positive selection among human populations with starchy diets, including the Hadza (Perry et al. 2007). Such evidence is lacking for chimpanzees, suggesting that an adaptive shift to chewing (and wadging) starchy foods may have favored the increased expression of salivary amylase in the human lineage.

### Conclusions

The strength of any hypothesis depends on its predictive power and ability to withstand falsification from multiple lines of scientific enquiry. To date, the USO hypothesis for hominin diets has rested on ecological, morphological, and isotopic comparisons with living and fossil USO-consumers. Here we have shown that the mechanical properties of USOs agree well with hominin dietary inferences based on dental functional morphology, masticatory biomechanics, and dental microwear. We suggest a model of USO partitioning in which *Paranthropus* relied on hard-brittle  $C_4$  corms and hard-tough  $C_3$  tubers to a greater extent than *Australopithecus* did, which may have relied on soft-tough  $C_4$  bulbs as a primary fallback food. Lastly, we demonstrate that roasting behavior reduces the manual and oral processing costs of consuming undomesticated tubers. These results support the adaptive advantages of roasting behavior and fill an important empirical void for evaluating the plausibility of USOs in the diets of hominins and early *Homo*.

**Acknowledgements** We are grateful to Nigel C. Bennett, M. Casper Bonyongo, Erin E. Butler, Georges Chuyong, Maricela Constantino, the Duckitt family (Jeanette, John, Michael, Richard, Susan, and Wilferd), Nick Georgiadis, Gudo, Johannes and Lene Kleppe, Alicia Krige, Annelise LeRoux, Lomojo, Sarah L. McCabe, George H. Perry, Eric Philander, Frank W. Marlowe, Mustaffa, Kerry Outram, Moses Sainge, Bongani Sethebe, Marietjie Smit, Shirley C. Strum, Duncan Thomas, Carel P. van Schaik, Dirk Wolters, and Bernard Wood. Research permission was granted by CapeNature (permit no. AAA005-00055-0028), the Henry Oppenheimer Okavango Research Center, the Mpala Research Center, and the Northern Cape Department of Nature and Environmental Conservation (permit no. 030/2006). Research funding was received from the American Philosophical Society, the National Science Foundation (BCS-0643122 and IGERT 9987590), the University of California Santa Cruz (grants from the Committee on Research and the Division of Social Sciences), and the Wenner-Gren Foundation.

## Appendix

## Mechanical properties of plant underground storage organs

| USO form, genus, and species                | Family         | Collection locality | Fracture toughness ( $\text{J m}^{-2}$ ) | Young's modulus (MPa) |
|---|----------------|---------------------|--|-----------------------|
| <b>Bulbs</b>                                |                |                     |  |                       |
| <i>Albuca canadensis</i>                    | Hyacinthaceae  | WF                  | 184.0                                    | 3.3                   |
| <i>Albuca cooperi</i>                       | Hyacinthaceae  | WF                  | 329.0                                    | 0.8                   |
| <i>Albuca juncifolia</i>                    | Hyacinthaceae  | WF                  | 350.0                                    | 5.0                   |
| <i>Albuca maxima</i>                        | Hyacinthaceae  | K                   | 40.0                                     | 1.4                   |
| <i>Albuca setosa</i>                        | Hyacinthaceae  | WF                  | 219.0                                    | 3.1                   |
| <i>Albuca spiralis</i>                      | Hyacinthaceae  | K                   | 87.0                                     | 1.7                   |
| <i>Amaryllis belladonna</i>                 | Amaryllidaceae | WF                  | 600.0                                    | 0.3                   |
| <i>Boophane disticha</i>                    | Amaryllidaceae | Maun                | 161.0                                    | 3.2                   |
| <i>Brunsvigia orientalis</i>                | Amaryllidaceae | WF                  | 2293.0                                   | 2.9                   |
| <i>Brunsvigia</i> sp.                       | Amaryllidaceae | K                   | 260.0                                    | 1.0                   |
| <i>Crinum foetidum</i>                      | Amaryllidaceae | Maun                | 126.0                                    | 1.1                   |
| <i>Crinum</i> sp.                           | Amaryllidaceae | HOORC               | 101.0                                    | 2.8                   |
| <i>Dipcadi crispum</i>                      | Hyacinthaceae  | WF                  | 451.0                                    | 0.8                   |
| <i>Gethyllis affra</i>                      | Amaryllidaceae | WF                  | 313.0                                    | 2.4                   |
| <i>Haemanthus coccineus</i>                 | Amaryllidaceae | WF                  | 560.0                                    | 4.7                   |
| <i>Haemanthus crispus</i>                   | Amaryllidaceae | K                   | 247.0                                    | 2.1                   |
| <i>Hessea chaplinii</i>                     | Amaryllidaceae | WF                  | 77.0                                     | 0.3                   |
| <i>Lachenalia carnosia</i>                  | Hyacinthaceae  | K                   | 150.0                                    | 2.7                   |
| <i>Lachenalia mutabilis</i>                 | Hyacinthaceae  | WF                  | 126.0                                    | 3.1                   |
| <i>Lachenalia unifolia</i>                  | Hyacinthaceae  | WF                  | 100.0                                    | 1.2                   |
| <i>Ledebouria cooperi</i>                   | Hyacinthaceae  | D                   | 120.0                                    | 3.2                   |
| <i>Ornithogalum thyrsoides</i>              | Hyacinthaceae  | WF                  | 202.0                                    | 1.9                   |
| <i>Oxalis hirta</i> var. <i>tenuicaulis</i> | Oxalidaceae    | WF                  | 324.0                                    | 1.5                   |
| <i>Oxalis obliquifolia</i>                  | Oxalidaceae    | D                   | 183.0                                    | –                     |
| <i>Oxalis purpurea</i>                      | Oxalidaceae    | WF                  | 437.0                                    | 1.3                   |
| <i>Oxalis pusilla</i>                       | Oxalidaceae    | WF                  | 683.0                                    | 1.7                   |
| <i>Oxalis versicolor</i>                    | Oxalidaceae    | WF                  | 606.0                                    | 2.1                   |
| <i>Oxalis</i> sp. A                         | Oxalidaceae    | K                   | 135.0                                    | 1.8                   |
| <i>Oxalis</i> sp. B                         | Oxalidaceae    | K                   | 221.0                                    | 3.6                   |
| <i>Scilla dracomontana</i>                  | Hyacinthaceae  | D                   | 336.0                                    | 3.9                   |

| USO form, genus, and species    | Family          | Collection locality | Fracture toughness ( $\text{J m}^{-2}$ ) | Young's modulus (MPa) |
|---------------------------------|-----------------|---------------------|--|-----------------------|
| <i>Tulbaghia capensis</i>       | Aliaceae        | WF                  | 519.0                                    | 8.0                   |
| <i>Veltheimia glauca</i>        | Hyacinthaceae   | WF                  | 420.0                                    | 4.1                   |
| Corms                           |                 |                     |  |                       |
| <i>Babiana ambigua</i>          | Iridaceae       | WF                  | 194.0                                    | 7.2                   |
| <i>Babiana scariosa</i>         | Iridaceae       | K                   | 362.0                                    | 7.1                   |
| <i>Chlorophyllum triflorum</i>  | Anthericaceae   | WF                  | 180.0                                    | 3.1                   |
| <i>Cyperus alatus</i>           | Cyperaceae      | MRC                 | 288.0                                    | 8.8                   |
| <i>Cyperus cristatus</i>        | Cyperaceae      | MRC                 | 117.0                                    | 4.7                   |
| <i>Empodium veratrifolium</i>   | Hypoxidaceae    | WF                  | 234.0                                    | 2.3                   |
| <i>Ferraria uncinata</i>        | Iridaceae       | K                   | 325.0                                    | 8.8                   |
| <i>Gladiolus carinatus</i>      | Iridaceae       | WF                  | 100.0                                    | 6.2                   |
| <i>Gladiolus gracilis</i>       | Iridaceae       | WF                  | 220.0                                    | 2.4                   |
| <i>Hesperantha falcata</i>      | Iridaceae       | WF                  | 634.0                                    | 4.6                   |
| <i>Ixia maculata</i>            | Iridaceae       | WF                  | 291.0                                    | 5.8                   |
| <i>Ixia monodelphia</i>         | Iridaceae       | WF                  | 426.0                                    | 4.4                   |
| <i>Lapeirousia jacquinii</i>    | Iridaceae       | WF                  | 86.0                                     | 3.8                   |
| <i>Lapeirousia silenoides</i>   | Iridaceae       | K                   | 487.0                                    | 5.7                   |
| <i>Melaspheerula ramosa</i>     | Iridaceae       | WF                  | 261.0                                    | 3.1                   |
| <i>Moraea fugax</i>             | Iridaceae       | WF                  | 158.0                                    | 1.8                   |
| <i>Moraea miniata</i>           | Iridaceae       | K                   | 241.0                                    | 3.6                   |
| <i>Moraea tricolor</i>          | Iridaceae       | WF                  | 299.0                                    | 3.5                   |
| <i>Romulea flava</i>            | Iridaceae       | WF                  | 232.0                                    | 3.4                   |
| <i>Romulea cf. tabularis</i>    | Iridaceae       | WF                  | 292.0                                    | 5.7                   |
| <i>Sparaxis bulbifera</i>       | Iridaceae       | WF                  | 269.0                                    | 12.0                  |
| <i>Spiloxene ovata</i>          | Hypoxidaceae    | WF                  | 245.0                                    | 3.9                   |
| <i>Wachendorffia paniculata</i> | Haemodorumaceae | WF                  | 100.0                                    | 3.5                   |
| <i>Watsonia coccinea</i>        | Iridaceae       | WF                  | 328.0                                    | 2.3                   |
| Rhizomes                        |                 |                     |  |                       |
| <i>Bulbinella triquetra</i>     | Asphodelaceae   | WF                  | 3645.0                                   | 2.5                   |
| <i>Cynodon dactylon</i>         | Poaceae         | MRC                 | 3770.0                                   | 14.0                  |
| <i>Cyperus dives</i>            | Cyperaceae      | HOORC               | 2379.0                                   | 13.7                  |
| <i>Ficinia lateralis</i>        | Cyperaceae      | WF                  | 7967.0                                   | 13.6                  |
| <i>Nymphaea lotus</i>           | Nymphaeaceae    | HOORC               | 414.0                                    | –                     |
| <i>Phragmites australis</i>     | Poaceae         | HOORC               | 451.0                                    | 6.2                   |

## Appendix continued

| USO form, genus, and species                 | Family         | Collection locality | Fracture toughness (J m <sup>-2</sup> ) | Young's modulus (MPa) |
|--|----------------|---------------------|---|-----------------------|
| <i>Schoenoplectus corymbosus</i>             | Cyperaceae     | HOORC               | 4743.0                                  | 13.9                  |
| <i>Willdenowia incurvata</i>                 | Restionaceae   | WF                  | 25468.0                                 | 18.7                  |
| <i>Zantedeschia aethiopica</i>               | Araceae        | WF                  | 193.0                                   | 5.5                   |
| Root tubers                                  |                |                     |   |                       |
| <i>Acanthosicyos naudinianus</i>             | Cucurbitaceae  | H                   | 979.0                                   | 8.0                   |
| <i>Arctopus echinatus</i>                    | Apiaceae       | WF                  | 2758.0                                  | 2.7                   |
| <i>Asparagus asparagoides</i>                | Liliaceae      | WF                  | 114.0                                   | 2.8                   |
| <i>Asparagus exuvialis</i>                   | Liliaceae      | Maun                | 143.0                                   | 2.2                   |
| <i>Asparagus rubicundus</i>                  | Liliaceae      | WF                  | 296.0                                   | 1.5                   |
| <i>Cissampelos capensis</i>                  | Menispermaceae | WF                  | 3484.0                                  | 9.2                   |
| <i>Coccinea aurantiaca</i>                   | Cucurbitaceae  | Mangola             | 399.0                                   | 3.5                   |
| <i>Conicosia elongata</i>                    | Aizoaceae      | K                   | 874.0                                   | 4.8                   |
| <i>Cucumis africanus</i>                     | Cucurbitaceae  | H                   | 1397.0                                  | 8.3                   |
| <i>Dioscorea</i> sp.                         | Dioscoreaceae  | Korup               | 5955.0                                  | 5.3                   |
| <i>Eriosperrum capense</i>                   | Rusaceae       | WF                  | 466.0                                   | 5.4                   |
| <i>Eriosperrum nanum</i>                     | Rusaceae       | WF                  | 1089.0                                  | 3.8                   |
| <i>Eriosperrum</i> sp.                       | Rusaceae       | K                   | 205.0                                   | 2.6                   |
| <i>Euphorbia tuberosa</i>                    | Euphorbiaceae  | WF                  | 2080.0                                  | 3.2                   |
| <i>Helichrysum</i> cf. <i>cochleariforme</i> | Asteraceae     | WF                  | 916.0                                   | 2.9                   |
| <i>Hypoxis argenta</i>                       | Hypoxidaceae   | D                   | 825.0                                   | 0.8                   |
| <i>Hypoxis hemerocallidea</i>                | Hypoxidaceae   | Pretoria            | 1290.0                                  | 7.8                   |
| <i>Monsonia longipes</i>                     | Geraniaceae    | MRC                 | 1243.0                                  | 5.6                   |
| <i>Nymphaea lotus</i>                        | Nymphaeaceae   | HOORC               | 1139.0                                  | 5.5                   |
| <i>Nymphaea nouchali</i>                     | Nymphaeaceae   | HOORC               | 1064.0                                  | 9.4                   |
| <i>Pelargonium senecioides</i>               | Geraniaceae    | WF                  | 902.0                                   | 8.2                   |
| <i>Pelargonium triste</i>                    | Geraniaceae    | WF                  | 742.0                                   | 4.6                   |
| <i>Pergularia daemia</i>                     | Asclepiadaceae | Maun                | 2303.0                                  | 5.1                   |
| <i>Pteronia divaricata</i>                   | Asteraceae     | WF                  | 754.0                                   | 7.6                   |
| <i>Rumex latifolius</i>                      | Polygalaceae   | WF                  | 735.0                                   | 5.9                   |
| <i>Vatovaea pseudolablab</i>                 | Fabaceae       | Mangola             | 448.0                                   | –                     |
| <i>Vigna frutescens</i>                      | Fabaceae       | Mangola             | 4859.0                                  | –                     |
| <i>Vigna macrorhyncha</i>                    | Fabaceae       | Mangola             | 543.0                                   | 4.2                   |
| <i>Vigna</i> sp. A                           | Fabaceae       | Mangola             | 848.0                                   | –                     |
| Unidentified no 1                            | Apiaceae       | MRC                 | 1081.0                                  | 5.5                   |

| USO form, genus, and species | Family      | Collection locality | Fracture toughness ( $\text{J m}^{-2}$ ) | Young's modulus (MPa) |
|------------------------------|-------------|---------------------|--|-----------------------|
| Unidentified no 2            | Apiaceae    | MRC                 | 679.0                                    | 4.2                   |
| Unidentified legume no 1     | Leguminosae | WF                  | 2114.0                                   | 7.0                   |
| Unidentified legume no 2     | Leguminosae | WF                  | 318.0                                    | 1.4                   |

Collection locality key: D Drakensberg Mountains, HOORC Henry Oppenheimer Okavango Research Center, H Hotazel, K Kamieskroon (Namaqualand), MRC Mpala Research Centre, WF Wayland's Farm

Appendix continued

## References

- Ackermann, R. R., & Cheverud, J. M. (2004). Detecting genetic drift versus selection in human evolution. *Proceedings of the National Academy of Sciences of the United States of America*, *101*, 17946–17951. doi:10.1073/pnas.0405919102.
- Agnew, A. D. Q., & Agnew, S. (1994). *Kenya upland wild flowers*. Nairobi: East African Natural History Society.
- Altmann, S. A. (1998). *Foraging for survival: Yearling baboons in Africa*. Chicago: University of Chicago Press.
- Altmann, S. A., & Altmann, J. (1970). *Baboon ecology: African field research*. Basel: S. Karger.
- Barton, R. A. (1993). Sociospatial mechanisms of feeding competition in female olive baboons, *Papio anubis*. *Animal Behaviour*, *46*, 791–802. doi:10.1006/anbe.1993.1256.
- Boag, P. T., & Grant, P. R. (1981). Intense natural selection in a population of Darwin's finches (Geospizinae) in the Galapagos. *Science*, *214*, 82–85. doi:10.1126/science.214.4516.82.
- Boag, P. T., & Grant, P. R. (1984). Darwin's finches (*Geospiza*) on Isla Daphne Major, Galapagos: Breeding and feeding ecology in a climatically variable environment. *Ecological Monographs*, *54*, 463–489. doi:10.2307/1942596.
- Bonyongo, M. C., Bredenkamp, G. J., & Veenendaal, E. (2000). Floodplain vegetation in the Nxaraga Lagoon area, Okavango Delta, Botswana. *South African Journal of Botany*, *66*, 15–21.
- Campbell, A. (1986). The use of wild food plants, and drought in Botswana. *Journal of Arid Environments*, *11*, 81–91.
- Codron, J., Codron, D., Lee-Thorp, J. A., Sponheimer, M., Bond, W. J., de Ruiter, D., et al. (2005). Taxonomic, anatomical, and spatio-temporal variations in the stable carbon and nitrogen isotopic compositions of plants from an African savanna. *Journal of Archaeological Science*, *32*, 1757–1772. doi:10.1016/j.jas.2005.06.006.
- Conklin-Brittain, N. L., Wrangham, R. W., & Smith, C. C. (2002). A two-stage model of increased dietary quality in early hominid evolution: The role of fiber. In P. S. Ungar & M. F. Teaford (Eds.), *Human diet: Its origin and evolution* (pp. 61–76). London: Bergin and Garvey.
- Coursey, D. G. (1973). Hominid evolution and hypogeous plant foods. *Man*, *8*, 634–635.
- Cowling, R. M., Esler, K. J., & Rundel, P. W. (1999). Namaqualand, South Africa—An overview of a unique winter-rainfall desert ecosystem. *Plant Ecology*, *142*, 3–21. doi:10.1023/A:1009831308074.
- Daegling, D. J., & Grine, F. E. (1999). Terrestrial foraging and dental microwear in *Papio ursinus*. *Primates*, *40*, 559–572. doi:10.1007/BF02574831.
- Darvell, B. W., Lee, P. K. D., Yuen, T. D. B., & Lucas, P. W. (1996). A portable fracture toughness tester for biological materials. *Measurement Science & Technology*, *7*, 954–962. doi:10.1088/0957-0233/7/6/016.
- Deacon, H. J. (1976). *Where hunters gathered: A study of Holocene Stone Age people in the Eastern Cape*. Claremont: South African Archaeological Society.
- Deacon, H. J. (1995). Two late Pleistocene-Holocene archaeological depositories from the southern Cape, South Africa. *South African Archaeological Bulletin*, *50*, 121–131. doi:10.2307/3889061.
- Demes, B., & Creel, N. (1988). Bite force, diet, and cranial morphology of fossil hominids. *Journal of Human Evolution*, *17*, 657–670. doi:10.1016/0047-2484(88)90023-1.
- Elgart-Berry, A. (2004). Fracture toughness of mountain gorilla (*Gorilla gorilla beringei*) food plants. *American Journal of Primatology*, *62*, 275–285. doi:10.1002/ajp.20021.
- Ellery, K., & Ellery, W. (1997). *Plants of the Okavango Delta: A field guide*. Durban: Tsaro Publishers.

- Goldblatt, P., & Manning, J. C. (2002). Plant diversity of the Cape Region of southern Africa. *Annals of the Missouri Botanical Garden*, 89, 281–302. doi:10.2307/3298566.
- Grant, P. R., & Grant, B. R. (2002). Unpredictable evolution in a 30-year study of Darwin's finches. *Science*, 296, 707–711. doi:10.1126/science.1070315.
- Gregory, W. K., & Hellman, M. (1939). The South African fossil man-apes and the origin of the human dentition. *The Journal of the American Dental Association*, 26, 558–564.
- Grine, F. E., & Kay, R. F. (1988). Early hominid diets from quantitative image analysis of dental microwear. *Nature*, 333, 765–768. doi:10.1038/333765a0.
- Grine, F. E., Ungar, P. S., & Teaford, M. F. (2006a). Was the early Pliocene hominin 'Australopithecus' anamensis a hard object feeder? *South African Journal of Science*, 102, 301–310.
- Grine, F. E., Ungar, P. S., Teaford, M. F., & El-Zaatari, S. (2006b). Molar microwear in *Praeanthropus afarensis*: Evidence for dietary stasis through time and under diverse paleoecological conditions. *Journal of Human Evolution*, 51, 297–319. doi:10.1016/j.jhevol.2006.04.004.
- Hamilton, W. J., Buskirk, R. E., & Buskirk, W. H. (1978). Omnivory and utilization of food resources by chacma baboons, *Papio ursinus*. *American Naturalist*, 112, 911–924. doi:10.1086/283331.
- Hatley, T., & Kappelman, J. (1980). Bears, pigs, and Plio-Pleistocene hominids: A case for the exploitation of belowground food resources. *Human Ecology*, 8, 371–387. doi:10.1007/BF01561000.
- Hernandez-Aguilar, R. A., Moore, J., & Pickering, T. R. (2007). Savanna chimpanzees use tools to harvest the underground storage organs of plants. *Proceedings of the National Academy of Sciences of the United States of America*, 104, 19210–19213. doi:10.1073/pnas.0707929104.
- Hladik, A., Bahuchet, C., Ducatillon, C., & Hladik, C. M. (1984). Les plantes à tubercules de la forêt dense d'Afrique Centrale. *Revue d'Ecologie: La Terre et la Vie*, 39, 249–290.
- Hesla, B. I., Tieszen, L. L., & Imbamba, S. K. (1982). A systematic survey of C<sub>3</sub> and C<sub>4</sub> photosynthesis in the Cyperaceae of Kenya, East Africa. *Photosynthetica*, 16, 196–205.
- Hylander, W. L. (1988). Implications of in vivo experiments for interpreting the functional significance of "robust" australopithecine jaws. In F. E. Grine (Ed.), *Evolutionary history of the "robust" australopithecines* (pp. 55–83). New York: Aldine de Gruyter.
- Jolly, C. J. (1970). The seed-eaters: A new model of hominid differentiation based on a baboon analogy. *Man*, 5, 5–26. doi:10.2307/2798801.
- Kay, R. F. (1985). Dental evidence for the diet of *Australopithecus*. *Annual Review of Anthropology*, 14, 315–341. doi:10.1146/annurev.an.14.100185.001531.
- Kinzey, W. G., & Norconk, M. A. (1990). Hardness as a basis of fruit choice in two sympatric primates. *American Journal of Physical Anthropology*, 81, 5–16. doi:10.1002/ajpa.1330810103.
- Kinzey, W. G., & Norconk, M. A. (1993). Physical and chemical properties of fruit and seeds eaten by *Pithecia* and *Chiropotes* in Surinam and Venezuela. *International Journal of Primatology*, 14, 207–227. doi:10.1007/BF02192632.
- Laden, G., & Wrangham, R. W. (2005). The rise of the hominids as an adaptive shift in fallback foods: Plant underground storage organs (USOs) and australopithecine origins. *Journal of Human Evolution*, 49, 482–498. doi:10.1016/j.jhevol.2005.05.007.
- Lambert, J. E., Chapman, C. A., Wrangham, R. W., & Conklin-Brittain, N. L. (2004). Hardness of cercopithecine foods: Implications for the critical function of enamel thickness in exploiting fallback foods. *American Journal of Physical Anthropology*, 125, 363–368. doi:10.1002/ajpa.10403.
- Lanjouw, A. (2002). Behavioural adaptations to water scarcity in Tongo chimpanzees. In C. Boesch, G. Hohmann, & L. F. Marchant (Eds.), *Behavioural diversity in chimpanzees and bonobos* (pp. 52–60). Cambridge: Cambridge University Press.
- Le Roux, A. (2005). *Namaqualand: South African wildflower guide no. 1*. Cape Town: Botanical Society of South Africa.
- Lee-Thorp, J., & Sponheimer, M. (2006). Contributions of biogeochemistry to understanding hominin dietary ecology. *Yearbook of Physical Anthropology*, 49, 131–148. doi:10.1002/ajpa.20519.
- Lockwood, C. A., Menter, C. G., Moggi-Cecchi, J., & Keyser, A. W. (2007). Extended male growth in a fossil hominin species. *Science*, 318, 1443–1446. doi:10.1126/science.1149211.
- Lovegrove, B. G., & Jarvis, J. U. M. (1986). Coevolution between mole-rats (Bathergidae) and a geophyte, *Micranthus* (Iridaceae). *Cimbebasia*, 8, 80–85.
- Lucas, P. W. (2004). *Dental functional morphology: How teeth work*. Cambridge: Cambridge University Press.
- Lucas, P. W., Beta, T., Darvell, B. W., Dominy, N. J., Essackjee, H. C., Lee, P. K. D., et al. (2001). Field kit to characterize physical, chemical and spatial aspects of potential primate foods. *Folia Primatologica*, 72, 11–25. doi:10.1159/000049914.
- Lucas, P. W., Corlett, R. T., & Luke, D. A. (1985). Plio-Pleistocene hominid diets: An approach combining masticatory and ecological analysis. *Journal of Human Evolution*, 14, 187–202. doi:10.1016/S0047-2484(85)80006-3.
- Lucas, P. W., & Peters, C. R. (2000). Function of postcanine tooth shape in mammals. In M. F. Teaford, M. M. Smith, & M. W. J. Ferguson (Eds.), *Development, function and evolution of teeth* (pp. 282–289). Cambridge: Cambridge University Press.
- Macho, G. A., Shimizu, D., Jiang, Y., & Spears, I. R. (2005). *Australopithecus anamensis*: A finite-element approach to studying the functional adaptations of extinct hominins. *The Anatomical Record. Part A, Discoveries in Molecular, Cellular, and Evolutionary Biology*, 283, 310–318. doi:10.1002/ar.a.20175.
- Malaisse, F., & Parent, G. (1985). Edible wild vegetable products in the Zambezian woodland area: A nutritional and ecological approach. *Ecology of Food and Nutrition*, 18, 43–82.
- Manning, J. C., Goldblatt, P., & Snijman, D. (2002). *The color encyclopedia of Cape bulbs*. Portland: Timber Press.
- Marlowe, F. W. (2002). Why the Hadza are still hunter-gatherers. In S. Kent (Ed.), *Ethnicity, hunter-gatherers, and the "other": Association or assimilation in Africa* (pp. 247–275). Washington, D.C.: Smithsonian Institution Press.
- Marlowe, F. W. (2003). A critical period for provisioning by Hadza men: Implications for pair bonding. *Evolution and Human Behavior*, 24, 217–229. doi:10.1016/S1090-5138(03)00014-X.
- Marshall, A. J., & Wrangham, R. W. (2007). Evolutionary consequences of fallback foods. *International Journal of Primatology*, 28, 1219–1235. doi:10.1007/s10764-007-9218-5.
- Mason, H. (1972). *Western Cape sandveld flowers*. Cape Town: Struik Publishers.
- McCarthy, T. S., & Ellery, W. N. (1998). The Okavango Delta. *Transactions of the Royal Society of South Africa*, 53, 157–182.
- van der Merwe, N. J., Thackeray, J. F., Lee-Thorp, J. A., & Luyt, J. (2003). The carbon isotope ecology and diet of *Australopithecus africanus* at Sterkfontein, South Africa. *Journal of Human Evolution*, 44, 581–597. doi:10.1016/S0047-2484(03)00050-2.
- O'Connell, J. F., Hawkes, K., & Blurton Jones, N. G. (1999). Grandmothering and the evolution of *Homo erectus*. *Journal of Human Evolution*, 36, 461–485. doi:10.1006/jhev.1998.0285.
- O'Connell, J., Hawkes, K., & Jones, N. B. (2002). Meat-eating, grandmothering, and the evolution of early human diets. In P. S. Ungar & M. F. Teaford (Eds.), *Human diet: Its origin and evolution* (pp. 49–60). London: Bergin and Garvey.



- O'Connell, J. F., Hawkes, K., & Jones, N. B. (1988). Hadza hunting, butchering, and bone transport and their archaeological implications. *Journal of Anthropological Research*, *44*, 113–161.
- Orthen, B. (2001). A survey of the polysaccharide reserves in geophytes native to the winter-rainfall region of South Africa. *South African Journal of Botany*, *67*, 371–375.
- Pate, J. S., & Dixon, K. W. (1982). *Tuberous, cormous and bulbous plants: Biology of an adaptive strategy in Western Australia*. Nedlands: University of Western Australia Press.
- Perry, G. H., Dominy, N. J., Claw, K. G., Lee, A. S., Fiegler, H., Redon, R., et al. (2007). Diet and the evolution of human amylase gene copy number variation. *Nature Genetics*, *39*, 1256–1260. doi:10.1038/ng2123.
- Peters, C. R. (1987). Nut-like oil seeds: Food for monkeys, chimpanzees, humans, and probably ape-men. *American Journal of Physical Anthropology*, *73*, 333–363. doi:10.1002/ajpa.1330730306.
- Peters, C. R. (1990). African wild plants with rootstocks reported to be eaten raw: The monocotyledons, part I. *Mitteilungen aus dem Institut für Allgemeine Botanik Hamburg*, *23*, 935–952.
- Peters, C. R. (1993). Shell strength and primate seed predation of nontoxic species in eastern and southern Africa. *International Journal of Primatology*, *14*, 315–344. doi:10.1007/BF02192636.
- Peters, C. R. (1994). African wild plants with rootstocks reported to be eaten raw: The monocotyledons, part II. In J. H. Seyani & A. C. Chikuni (Eds.), *Proceedings of the XIIIth Plenary Meeting of AETFAT, Zomba, Malawi* (pp. 25–38). Zomba: National Herbarium and Botanic Gardens of Malawi.
- Peters, C. R. (1996). African wild plants with rootstocks reported to be eaten raw: The monocotyledons, part III. In L. J. G. van der Maesen, X. M. van der Burgt, J. M. van Medenbach, & de Rooy (Eds.), *The biodiversity of African plants* (pp. 665–677). Dordrecht: Kluwer Academic.
- Peters, C. R., & Maguire, B. (1981). Wild plant foods of the Makapansgat area: A modern ecosystems analogue for *Australopithecus africanus* adaptations. *Journal of Human Evolution*, *10*, 565–583. doi:10.1016/S0047-2484(81)80048-6.
- Peters, C. R., & O'Brien, E. M. (1981). The early hominid plant-food niche: Insights from an analysis of plant exploitation by *Homo*, *Pan*, and *Papio* in eastern and southern Africa. *Current Anthropology*, *22*, 127–140. doi:10.1086/202631.
- Peters, C. R., O'Brien, E. M., & Drummond, R. B. (1992). *Edible wild plants of sub-Saharan Africa: An annotated check list, emphasizing the woodland and savanna floras of eastern and southern Africa, including plants utilized for food by chimpanzees and baboons*. Kew: Royal Botanic Gardens.
- Peters, C. R., & Vogel, J. C. (2005). Africa's wild C<sub>4</sub> plant foods and possible early hominid diets. *Journal of Human Evolution*, *48*, 219–236. doi:10.1016/j.jhevol.2004.11.003.
- Procheş, Ş., Cowling, R. M., & du Preez, D. R. (2005). Patterns of geophyte diversity and storage organ size in the winter rainfall region of southern Africa. *Diversity & Distributions*, *11*, 101–109. doi:10.1111/j.1366-9516.2005.00132.x.
- Procheş, Ş., Cowling, R. M., Goldblatt, P., Manning, J. C., & Snijman, D. A. (2006). An overview of the Cape geophytes. *Biological Journal of the Linnean Society*, *87*, 27–43. doi:10.1111/j.1095-8312.2006.00557.x.
- Reed, K. E. (1997). Early hominid evolution and ecological change through the African Plio-Pleistocene. *Journal of Human Evolution*, *32*, 289–322. doi:10.1006/jhev.1996.0106.
- Robinson, J. T. (1954). Prehominid dentition and hominid evolution. *Evolution; International Journal of Organic Evolution*, *8*, 324–334. doi:10.2307/2405779.
- Rosenberger, A. L., & Kinzey, W. G. (1976). Functional patterns of molar occlusion in platyrrhine primates. *American Journal of Physical Anthropology*, *45*, 281–298. doi:10.1002/ajpa.1330450214.
- Rundel, P. W., Esler, K. J., & Cowling, R. M. (1999). Ecological and phylogenetic patterns of carbon isotope discrimination in the winter-rainfall flora of the Richtersveld, South Africa. *Plant Ecology*, *142*, 133–148. doi:10.1023/A:1009878429455.
- Ryan, A. S., & Johanson, D. C. (1989). Anterior dental microwear in *Australopithecus afarensis*. *Journal of Human Evolution*, *18*, 235–268. doi:10.1016/0047-2484(89)90051-1.
- Sage, R. F., & Monson, R. K. (1999). *C<sub>4</sub> plant biology*. New York: Academic Press.
- Schluter, D., & Grant, P. R. (1984). Determinants of morphological patterns in communities of Darwin's finches. *American Naturalist*, *123*, 175–196. doi:10.1086/284196.
- Schoeninger, M. J., Bunn, H. T., Murray, S. S., & Marlett, J. A. (2001). Composition of tubers used by Hadza foragers of Tanzania. *Journal of Food Composition and Analysis*, *14*, 15–25. doi:10.1006/jfca.2000.0961.
- Schoeninger, M. J., Moore, J., & Sept, J. M. (1999). Subsistence strategies of two "savanna" chimpanzee populations: The stable isotope evidence. *American Journal of Primatology*, *49*, 297–314. doi:10.1002/(SICI)1098-2345(199912)49:4<297::AID-AJP2>3.0.CO;2-N.
- Scott, R. S., Ungar, P. S., Bergstrom, T. S., Brown, C. A., Grine, F. E., Teaford, M. F., et al. (2005). Dental microwear texture analysis shows within-species diet variability in fossil hominins. *Nature*, *436*, 693–695. doi:10.1038/nature03822.
- Sealy, J. C. (1986). *Stable carbon isotopes and prehistoric diets in the south-western Cape Province, South Africa*. Oxford: British Archaeological Reports International Series 293.
- Sillen, A., Hall, G., & Armstrong, R. (1995). Strontium calcium ratios (Sr/Ca) and strontium isotopic ratios (<sup>87</sup>Sr/<sup>86</sup>Sr) of *Australopithecus robustus* and *Homo* sp. from Swartkrans. *Journal of Human Evolution*, *28*, 277–285. doi:10.1006/jhev.1995.1020.
- Sponheimer, M., de Ruiter, D., Lee-Thorp, J., & Späth, A. (2005a). Sr/Ca and early hominid diets revisited: new data from modern and fossil tooth enamel. *Journal of Human Evolution*, *48*, 147–156. doi:10.1016/j.jhevol.2004.09.003.
- Sponheimer, M., & Lee-Thorp, J. A. (1999). Isotopic evidence for the diet of an early hominid, *Australopithecus africanus*. *Science*, *283*, 368–370. doi:10.1126/science.283.5400.368.
- Sponheimer, M., & Lee-Thorp, J. A. (2003). Differential resource utilization by extant great apes and australopithecines: Towards solving the C<sub>4</sub> conundrum. *Comparative Biochemistry and Physiology. Part A*, *136*, 27–34.
- Sponheimer, M., Lee-Thorp, J., de Ruiter, D., Codron, D., Codron, J., Baugh, A. T., et al. (2005b). Hominins, sedges, and termites: New carbon isotope data from the Sterkfontein valley and Kruger National Park. *Journal of Human Evolution*, *48*, 301–312. doi:10.1016/j.jhevol.2004.11.008.
- Stahl, A. B. (1984). Hominid dietary selection before fire. *Current Anthropology*, *25*, 151–168. doi:10.1086/203106.
- Stock, W. D., Chuba, D. K., & Verboom, G. A. (2004). Distribution of South African C<sub>3</sub> and C<sub>4</sub> species of Cyperaceae in relation to climate and phylogeny. *Austral Ecology*, *29*, 313–319. doi:10.1111/j.1442-9993.2004.01368.x.
- Teaford, M. F., & Ungar, P. S. (2000). Diet and the evolution of the earliest human ancestors. *Proceedings of the National Academy of Sciences of the United States of America*, *97*, 13506–13511. doi:10.1073/pnas.260368897.
- Terborgh, J. (1983). *Five New World primates: A study in comparative ecology*. Princeton: Princeton University Press.
- Tomita, K. (1966). The sources of food for the Hadzapi tribe: The life of a hunting tribe in East Africa. *Kyoto University African Studies*, *1*, 157–171.

- Ungar, P. S. (2004). Dental topography and diets of *Australopithecus afarensis* and early *Homo*. *Journal of Human Evolution*, *46*, 605–622. doi:10.1016/j.jhevol.2004.03.004.
- Ungar, P. S. (Ed.). (2007). *Evolution of the human diet: The known, the unknown, and the unknowable*. Oxford: Oxford University Press.
- Ungar, P. S., Grine, F. E., & Teaford, M. F. (2006a). Diet in early *Homo*: A review of the evidence and a new model of adaptive versatility. *Annual Review of Anthropology*, *35*, 209–228. doi:10.1146/annurev.anthro.35.081705.123153.
- Ungar, P. S., Grine, F. E., & Teaford, M. F. (2008). Dental microwear and diet of the Plio-Pleistocene hominin *Paranthropus boisei*. *PLoS ONE*, *3*, e2044. doi:10.1371/journal.pone.0002044.
- Ungar, P. S., Grine, F. E., Teaford, M. F., & El Zaatari, S. (2006b). Dental microwear and diets of African early *Homo*. *Journal of Human Evolution*, *50*, 78–95. doi:10.1016/j.jhevol.2005.08.007.
- Vincent, A. S. (1985a). Plant foods in savanna environments: A preliminary report of tubers eaten by the Hadza of northern Tanzania. *World Archaeology*, *17*, 131–148.
- Vincent, A. S. (1985b). *Wild tubers as a harvestable resource in the East African savannas: Ecological and ethnographic studies*. PhD thesis, University of California, Berkeley.
- Vogel, E. R., van Woerden, J. T., Lucas, P. W., Utami Atmoko, S. S., van Schaik, C. P., & Dominy, N. J. (2008). Functional ecology and evolution of hominoid molar enamel thickness: *Pan troglodytes schweinfurthii* and *Pongo pygmaeus wurmbii*. *Journal of Human Evolution*, *55*, 60–74. doi:10.1016/j.jhevol.2007.12.005.
- Walker, A. (1981). Dietary hypotheses and human evolution. *Philosophical Transactions of the Royal Society of London. Series B, Biological Sciences*, *292*, 57–64. doi:10.1098/rstb.1981.0013.
- White, T. D., WoldeGabriel, G., Asfaw, B., Ambrose, S., Beyene, Y., Bernor, R. L., et al. (2006). Asa Issie, Aramis and the origin of *Australopithecus*. *Nature*, *440*, 883–889. doi:10.1038/nature04629.
- Whiten, A., Byrne, R. W., & Henzi, S. P. (1987). The behavioral ecology of mountain baboons. *International Journal of Primatology*, *8*, 367–388. doi:10.1007/BF02737389.
- Wood, B., & Constantino, P. (2007). *Paranthropus boisei*: Fifty years of evidence and analysis. *Yearbook of Physical Anthropology*, *50*, 106–132. doi:10.1002/ajpa.20732.
- Wood, B., & Strait, D. (2004). Patterns of resource use in early *Homo* and *Paranthropus*. *Journal of Human Evolution*, *46*, 119–162. doi:10.1016/j.jhevol.2003.11.004.
- Woodburn, J. (1966). *The Hadza: The food quest of a hunting and gathering tribe of Tanzania* (16 mm. film). London: London School of Economics.
- Woodburn, J. (1968). An introduction to Hadza ecology. In R. B. Lee & I. DeVore (Eds.), *Man the hunter* (pp. 49–55). Chicago: Aldine.
- Woodburn, J. (1970). *Hunters and gatherers: The material culture of the nomadic Hadza*. London: British Museum.
- Wrangham, R. W. (2005). The delta hypothesis. In D. E. Lieberman, R. J. Smith, & J. Kelley (Eds.), *Interpreting the past: Essays on human, primate, and mammal evolution* (pp. 231–243). Leiden: Brill Academic.
- Wrangham, R. W. (2007). The cooking enigma. In P. S. Ungar (Ed.), *Evolution of the human diet: The known, the unknown, and the unknowable* (pp. 308–323). Oxford: Oxford University Press.
- Wrangham, R., & Conklin-Brittain, N. L. (2003). 'Cooking as a biological trait'. *Comparative Biochemistry and Physiology. Part A*, *136*, 35–46. doi:10.1016/S1095-6433(03)00020-5.
- Wrangham, R. W., Conklin, N. L., Chapman, C. A., & Hunt, K. D. (1991). The significance of fibrous foods for Kibale Forest chimpanzees. *Philosophical Transactions of the Royal Society of London. Series B, Biological Sciences*, *334*, 171–178. doi:10.1098/rstb.1991.0106.
- Wrangham, R. W., Jones, J. H., Laden, G., Pilbeam, D., & Conklin-Brittain, N. (1999). The raw and the stolen: Cooking and the ecology of human origins. *Current Anthropology*, *40*, 567–594. doi:10.1086/300083.
- Wrangham, R. W., Rogers, M. E., & Isabirye-Basuta, G. (1993). Ape food density in the ground layer in Kibale Forest, Uganda. *African Journal of Ecology*, *31*, 49–57. doi:10.1111/j.1365-2028.1993.tb00517.x.
- Wright, B. W. (2005). Craniodental biomechanics and dietary toughness in the genus *Cebus*. *Journal of Human Evolution*, *48*, 473–492. doi:10.1016/j.jhevol.2005.01.006.
- Yeakel, J. D., Bennett, N. C., Koch, P. L., & Dominy, N. J. (2007). The isotopic ecology of African mole rats informs hypotheses on the evolution of human diet. *Proceedings of the Royal Society B: Biological Sciences*, *274*, 1723–1730. doi:10.1098/rspb.2007.0330.
- Youngblood, D. (2004). Identifications and quantification of edible plant foods in the Upper (Nama) Karoo, South Africa. *Economic Botany*, *58*, 43–65. doi:10.1663/0013-0001(2004)58[S43:IAQO EPJ2.0.CO;2.