

Marshall University

Marshall Digital Scholar

---

The Parthenon

University Archives

---

Fall 9-9-1963

## The Parthenon, September 9, 1963

Marshall University

Follow this and additional works at: <https://mds.marshall.edu/parthenon>

---

### Recommended Citation

Marshall University, "The Parthenon, September 9, 1963" (1963). *The Parthenon*. 1491.  
<https://mds.marshall.edu/parthenon/1491>

This Newspaper is brought to you for free and open access by the University Archives at Marshall Digital Scholar. It has been accepted for inclusion in The Parthenon by an authorized administrator of Marshall Digital Scholar. For more information, please contact [zhangj@marshall.edu](mailto:zhangj@marshall.edu), [beachgr@marshall.edu](mailto:beachgr@marshall.edu).

# Welcome Class Of 1967

# The Parthenon

MARSHALL UNIVERSITY STUDENT NEWSPAPER

Vol. 63

HUNTINGTON, W. VA. MONDAY, SEPTEMBER 9, 1963

No. 7

## MU Officials Greet Freshmen

### 64 Honor Students Will Enroll

Preliminary figures show that some 64 freshman students have been admitted to the University with honor status as of Aug. 8, according to Luther E. Bledsoe, registrar and director of admissions.

The students' names and hometowns are as follows: Daniel W. Barnhart, Moundsville; Judy M. Bolash, Beckley; Ann C. Bove, Kenova; Andrea L. Burgess, Lewisburg; Anna C. Cole, South Charleston; Cheryl A. Copenhagen, St. Albans; Aaron J. Coznyk, Delbarton; Gary M. Crabtree, Fort Gay; Doris A. Crum, Kermit; Lowell C. Fagus, Frankford; Brenda S. Frye, Barboursville; Patricia L. Frye, Bluefield; William D. Garten, Pence Springs.

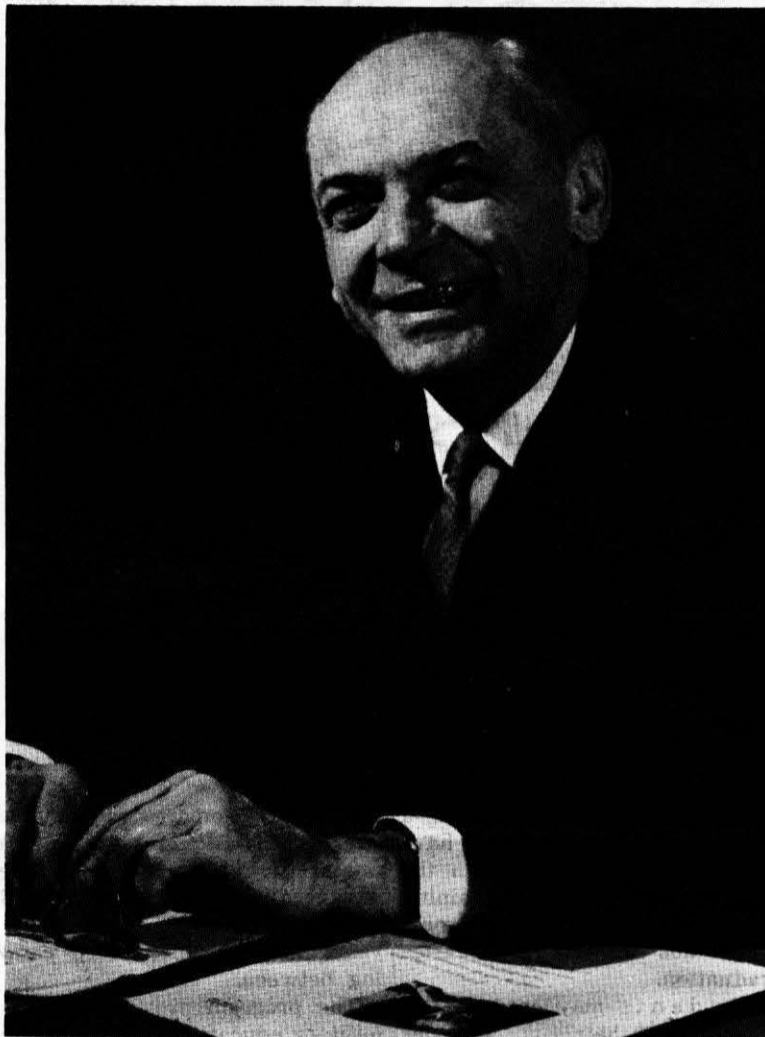
Paula M. Goodson, Welch; Victoria A. Hager, Jackson, Ohio; Patricia S. Haning, Pocahontas; Carol R. Hannah, Dingess; Erica J. Henderson, Williamstown; Cheryl L. Higgins, Hurricane; Patsy K. Holstein, Danville; Carol J. Hubbard, Williamson; Dorothy A. Knoll, Point Pleasant; Doris J. Maddox, Scioto, Ohio; Nancy J. Marshall, Delbarton; Karen J. Martin, Pocahontas; Karen D. Mattox, Nitro.

Dana P. Maynard, Wilsontdale; Barbara J. McIntire, Summersville; Shelby J. Meade, Chapmanville; Willoe K. Messinger, West Hamlin; Greta J. Miller, Oceana; Rebecca A. Mollohan, Dunbar; Virginia K. Moore, Hinton; Annabell E. Napier, Rainelle; Maurice L. Osborne, Kermit; Linda E. Perry, Barboursville; Joyce G. Platt, Shoals; Irelan L. Queen, Ravenswood; James K. Richmond, Beaver.

Anita C. Rinehart, War; Arline Roush, Letart; John T. Schoolcraft, Sharples; Barbara L. Shriver, Williamstown; Meritta J. Simpkins, Shoals; Virginia C. Smith, Richwood; William G. Smith, Parkersburg; Kathleen Sos, Man; Florence J. Sterne, Point Pleasant; Robert K. Taylor, Newton; Carla J. Vaughan, Wayne; Janet S. Wheatley, Danville; Sharon G. Williams, Dunbar; Charles T. Woodall, Hamlin; Jane L. Woodard, Chesapeake, Ohio; Larry E. Woodrum, Ironton, Ohio.

Linda J. Corgal, Mary L. Hogan, Joanna M. Healy, Linda M. Hoover, Michael A. Knight, Gloranna L. Lombardo, Wilda B. Maynor, Rebecca J. Mayo, and Douglas A. Sullivan, all of Huntington.

John Laidley, friend and admirer of Chief Justice John Marshall, was an active leader in the founding of Marshall Academy.



STEWART H. SMITH  
University President

### Challenge Is Given By President Smith

To the class of 1967:

As you begin your college career, you should have a clear understanding of why you want a college education. College really is the beginning of your life's work. During the coming four years, you will have the opportunity to build those habits and ideals that will lay the foundation for a happy, successful and satisfying life.

Your chief aim should be to develop your mind. Well-trained minds are in great demand today. Never before have business, industry and government competed so strongly for learned people. It is up to you to find the proper balance between scholarship and college activities. Participation in campus activities has its values and rewards but you must not sacrifice your studies for them.

Success in college, as in all other activities, comes slowly. It comes to those who do each day's work well and who use their talents and abilities to the fullest extent. Competition in college is greater than it was in high school. To secure good grades, to win a position on an athletic team, to excel in any of the various student activities requires hard work, common sense and good character.

Your future is in your hands. We have fine facilities and an excellent faculty, but they cannot educate you. You must educate yourself.

I extend each of you a most cordial welcome and hope that your college days will be filled with the greatest possible satisfaction and success.

Cordially Yours,  
STEWART H. SMITH  
President

### Student Body President Greet New Freshmen

Dear Freshmen:

I would like to take this opportunity on behalf of the entire student body to welcome you to Marshall University.

Remember that your main purpose in being here is to get an education. With this uppermost in your mind the other facets of campus life will take care of themselves.

Take pride in our school by exercising your rights as students. Support all activities that are made available to you. Our Artists Series and Cultural program is one of the best offered in the state. Our athletic teams play some of the best teams in the country. They, too need your support.

The Student Government office is located in the west end of the Student Union. We as members of your Student Government will be glad to assist you in any way possible.

Your stay here will be brief and one that you will never forget. Make the most of it.

Sincerely,  
KEN GAINER  
Student Body President

### Financial Aids To Be Available In Coming Year

Scholarships and loans will be available to freshmen for their sophomore and succeeding years of college, according to Stanley Shaw, dean of men. Six general types of scholarships and various types of loans are offered to those students showing a definite need for financial aid.

The awarding of these scholarships and loans is made at the beginning of each academic year, and applications are accepted in the Dean of Men's Office prior to April 1. However emergency financial aids for second semester will be considered and will be handled directly by Dean Shaw.

Loan funds and scholarship grants are usually administered by the Student Aid Committee, which consists of the dean of men, dean of women and three faculty members.

Although many of the scholarships and loans have restrictions on them, there are other funds for almost any situation, including fellowships, grants and student assistantships. Applications for the 1964-65 academic year will not be accepted until late in the fall semester, Dean Shaw said.



KEN GAINER  
Student Body President

**REGISTRAR'S EDITION**  
This is the official Registrar's Orientation Week Edition of "The Parthenon". It is the first edition of the 1963-64 school year.

The first regular edition of "The Parthenon" will appear on Friday, Sept. 20, and twice weekly thereafter on each Wednesday and Friday with the exception of vacation periods.

"The Parthenon" is available at stands located in the hallways of Old Main, Northcott Hall, Science Hall and in the Student Union and Cafeteria.

### Campus Facilities Set Hours

By BOBBIE WEBB  
Staff Reporter

The University facilities have announced their hours for the fall term.

Administrative offices will be open from 8 a.m. to 4:15 p.m. on weekdays and from 8:30 a.m. to 12 noon on Saturdays.

The James E. Morrow Library is open from 8 a.m. to 4:15 p.m. Monday through Thursday and from 8 a.m. to 5 p.m. Friday and Saturday during the regular school sessions.

The Bookstore is open from 8

a.m. to 4:15 p.m. Monday through Friday and from 8:30 a.m. to 12 noon on Saturday.

Breakfast is served in the cafeteria from 7 to 9 a.m. Monday through Saturday. Sunday breakfast is served from 8 to 9 a.m. Lunch is served from 10:45 a.m. to 1:15 p.m. Monday through Friday, from 11 a.m. to 1 p.m. on Saturday, and from 11:30 a.m. to 1:15 p.m. on Sunday. Dinner is served from 5 to 6:30 p.m. Monday through Friday, and on Saturday from 5 to 6:15 p.m.



**An Editorial**

**'The Parthenon' Extends Welcome To Freshmen**

Class of '67—Welcome! On behalf of the administration, the faculty, and your fellow students, "The Parthenon" is honored and pleased to extend this greeting.

We invite you to partake of everything Marshall has to offer, never losing sight of the purpose for which you are here—that is to obtain knowledge. The advantages of higher education are infinite and no greater joy exists than the probing of new ideas and concepts. We invite you to explore, to seek, to learn, and to grow intellectually, morally, and spiritually.

Growth is a key word at Marshall. Look around you at signs of expansion. New buildings and dormitories are springing up and more are on the drawing board.

The social advantages are great but one must learn to balance them carefully so they do not outweigh academic pursuits. As Otto "Swede" Gullickson, retired intramural director and campus legend was prone to remark: "All work and no play makes Jack and Jill a pretty dull girl and boy." You can have fun and maintain high academic standards, also, if you are careful.

There are many fields of interest for freshmen at Marshall. Students who maintain outstanding academic averages are eligible for honoraries. For freshmen these are Alpha Lambda Delta for women and Phi Eta Sigma for men.

The student chapel is open to students of all faiths throughout the day, and serves as a center for campus religious activities.

This year's cultural program promises to be one of the best in the University's history. Artist's Series, Convocations and Forums will feature top flight entertainment, lectures, and programs. Under the direction of Curtis Baxter since its origin 27 years ago, these series rank with similar programs at any school in the nation.

For the socially inclined, there are eight national fraternities and six national sororities as well as various independent social organizations.

Extracurricular activities include departmental honoraries, University Theatre, the Choral Union and three choirs, the debate team, and the University Marching Band. We have the only licensed educational radio station now in West Virginia. And of course let's not forget Student Government which guarantees each student a voice in his college life.

As you can see we've made a great deal of preparation for your arrival and now Marshall is ready for you. Are you ready for Marshall?

It's a tired cliché but one with a great deal of meaning: "You can only get out of something, what you put into it." Again, **GOOD LUCK!**

**JERRY BOWLES**  
Editor-in-Chief

**Student Union Is Center Of Campus Social Life**

By **PATRICIA VARNEY**

For the incoming freshman who wants to get acquainted with his fellow students, the Student Union will probably serve that function, as well as providing recreational facilities and short order fountain service.

Facilities include equipment for cribbage, chess, checkers and cards which may be obtained upon presentation of I.D. card at the counter. Ping pong and billiards are available for use in the basement. A juke box may be found in the lounge and dancing is permitted at any time. Two television sets are also available.

**Tournaments Sponsored**

Throughout the year, the Student Union will sponsor various tournaments of the games mentioned previously, according to Don Morris, manager of the Student Union. Medals will be awarded to the winners.

During the fall and winter terms there are free student mixes on Wednesday night from 7:30 to 9:30 p.m. and also on Saturday night. The Union is always open after a home football or basketball game. On some occasions a band will provide music for dances.

For approximately three out of every four Friday nights there will be a movie shown in the Student Union. The admission is \$25.

**Movies To Be Shown**

Among the movies to be shown this year are: "Sayonara", "Inn of the Sixth Happiness", "Butterfield 8", "Shane", "A Man Called Peter", "The Robe", "The Young Lions". In the early fall the movie begins at 8 p.m., but, as the days become shorter, the

time is changed to 7:30 p.m.

Meeting rooms, available to any groups on campus that wish to use them, are on the second floor and may be reserved by contacting Mr. Morris.

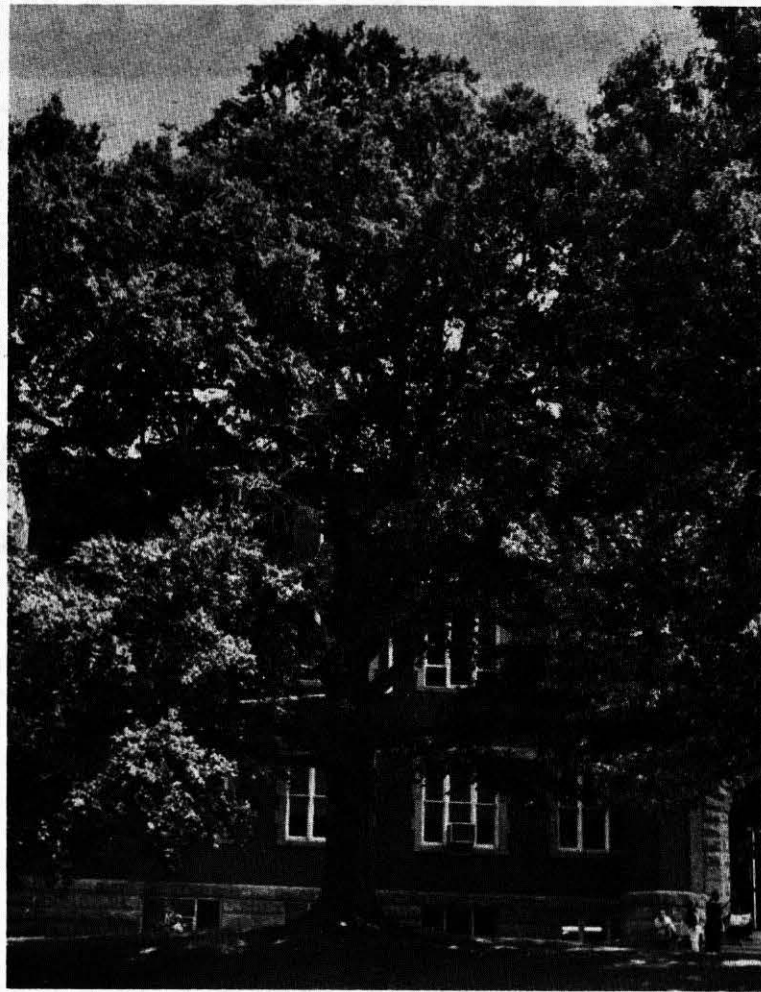
**Offices Located In Union**

In addition to these rooms, the building contains the Student Government offices in the west wing of the first floor and the Chief Justice (yearbook) office on the second floor.

Facilities are also available for receptions. The President's Reception for freshmen, Then Panhellenic Tea, and the Faculty Wives' Reception for new teaching personnel are a few of the receptions held here throughout the year.

The Union is open each week from 7:30 a.m. to 9 p.m. on Monday, Tuesday, and Thursday; 7:30 a.m. to 9:30 p.m. on Wednesday; and 7:30 a.m. until midnight on Friday and Saturday. It is closed on Sunday.

Tuition for the first subscription school on the site where "Old Main" is now located varied from twenty-five cents to a dollar a month for each pupil and the school was open but three months each year.



**Marshall's 'Spirit And Symbol'**

**OLDER THAN THE UNIVERSITY** itself, the Marshall Beech Tree stands a silent watch at the north-west corner of Old Main. Recognized as the "spirit and symbol of the University", it has stood almost two centuries. The plague beneath was presented by Omicron Delta Kappa, Men's leadership honorary, in 1957.

**ROTC Cadet Program Leads To Commission**

Freshman men who desire a military career might well have that opportunity through the Army Reserve Officers Training program offered here. This program leads to a commission after graduation.

Students may enter ROTC only during their first semester unless they have had secondary training in high school or some other type of school, such as a military academy.

Persons with prior military service may be eligible for an advanced course in ROTC.

The Department of Military Science and Tactics considers, individually the cases of students in these categories.

Military Science and tactics is an elective and enrollment in either the basic or advanced course is voluntary.

The program consists of two parts, the basic course and the advanced course, each extending throughout two academic years with attendance at a summer training camp included in the advanced course.

In the basic course—the fresh-

man and sophomore year—cadets study the basic and general phases of military training. The advanced curriculum is followed during the junior and senior years with summer camp coming between.

The program provides a basic military education in conjunction with other attributes essential to a military officer.

Flight instruction is authorized for qualified cadets in the Advanced Course, and is available at approximately 65 colleges and universities.

Special interest groups include the Pershing Rifles Drill Team, the Drum and Bugle Corps, Scabbard and Blade, the pistol team, and the counterguerilla platoon.

Students desiring to enroll in ROTC must meet the following requirements:

They must be a citizen of the United States, between the ages of 14 and 23, and be regularly enrolled in college. They must be examined and found physically fit.

These requirements apply to students entering the basic course. Information for the advanced course may be found in the general catalog.

**Bookstore Is Center For All Supplies**

By **CONNIE PERRY**  
Staff Reporter

The University Bookstore, located in the southwest corner of the basement of Old Main is the center for all school supplies.

Percy Galloway, manager of the bookstore, advises students to come early to buy books in order to avoid the fall rush. He also announced that there will be more used books available this year.

In addition to the selection of textbooks, the bookstore has paperback and hard back novels. The bookstore also sells engineering, art and other school supplies.

Some of the main items offered in the bookstore are the Marshall University sweatshirts and jackets. Marshall stationery is available and postage stamps may be purchased there.

Gymnastic supplies, including gym suits and tank suits are stocked at the bookstore.



**PERCY GALLOWAY**  
Bookstore Manager

**Health Clinic Open For Medical Needs**

The Student Health Clinic, located in the basement of the Health and Physical Education Building, will be open this fall between 9 a.m. and noon and between 1 and 4 p.m., according to Dr. T. Craig McKee, university physician.

Dr. McKee said that the clinic will make available all services which can be provided in a doctor's office. It offers immunization against smallpox, typhoid fever, tetanus, polio, and flu. The clinic will begin dispensing flu shots immediately following registration.



**W. DON MORRIS**  
Student Union Manager

**The Parthenon**

**MARSHALL UNIVERSITY STUDENT NEWSPAPER**

Established 1896  
Member of West Virginia Intercollegiate Press Association  
Full-leased Wire to The Associated Press.  
Entered as second class matter, May 29, 1945, at the Post Office at Huntington, West Virginia, under Act of Congress, March 8, 1879.  
Published semi-weekly during school year and weekly during summer by Department of Journalism, Marshall University, 16th Street and 3rd Avenue, Huntington, West Virginia.  
Off-campus subscription fee is \$6.00 per year.  
Activity fee covers on-campus student subscription at the rate of \$2.00 per semester plus 50 cents for each summer term.  
Phone 523-8582 or Journalism Dept., Ext. 235 of 523-3411

**STAFF**

Editor-in-Chief	Jerry Bowles
Managing Editor	Rick Tolley
Business Manager	Vince Gonzalez
News Editor	Bette Burnette
Campus Editor	Norma Plasterr
Feature Editor	Jim Rafter
Photographers	Joseph Shields, James Stone
Editorial Counselor	Carol Jefferson
Faculty Advisor	W. Page Pitt

COMMERCIAL PTG. & LITHO. CO.



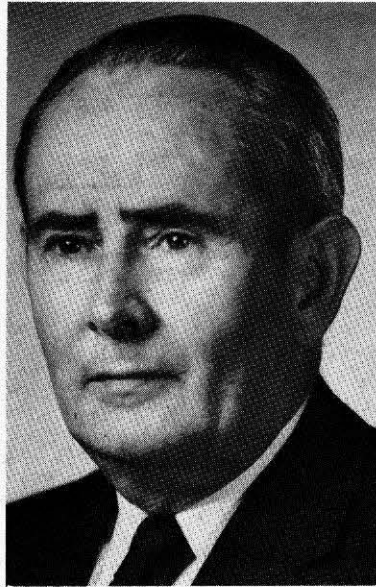
# Meet University Administration



**HAROLD E. APEL**  
Librarian



**J. FRANK BARTLETT**  
Dean,  
College of Arts And Sciences



**LUTHER E. BLEDSOE**  
Registrar



**LILLIAN HELMS BUSKIRK**  
Dean of Women



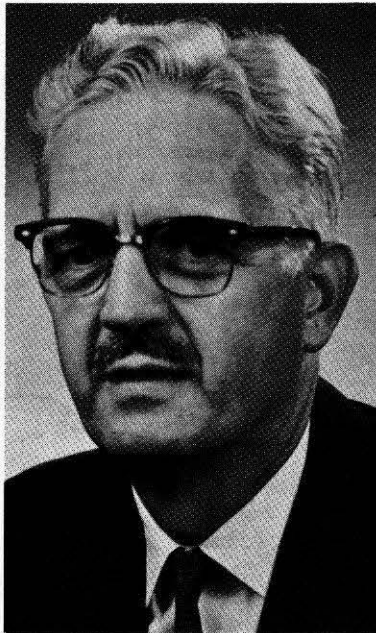
**PAUL H. COLLINS**  
Administrative Assistant and  
Director of Adult Education



**DAVID L. DODRILL**  
Director of Information



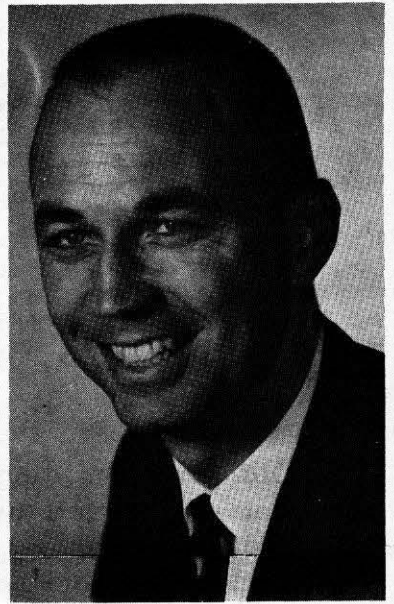
**A. E. HARRIS**  
Dean Graduate School



**A. E. McCASKEY**  
Dean,  
College of Applied Science



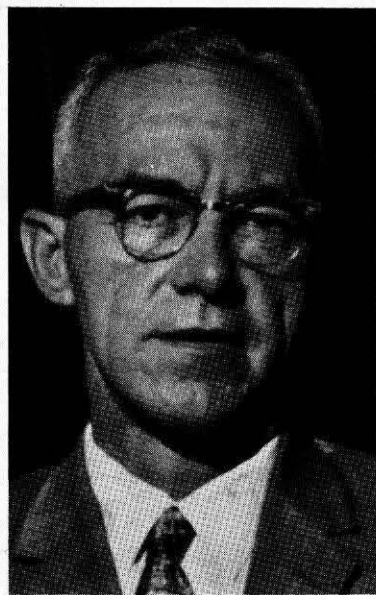
**JOHN M. SAYRE**  
Director of Development and  
Alumni Affairs



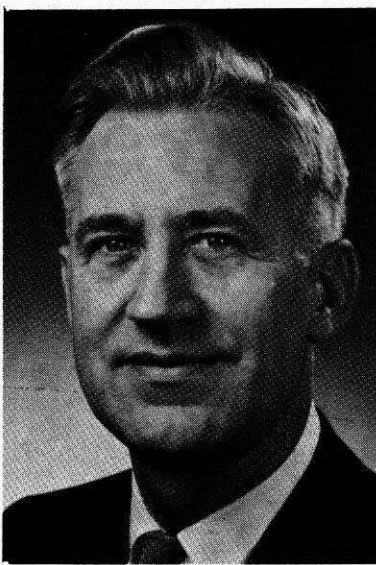
**STANLEY A. SHAW**  
Dean of Men



**JOSEPH S. SOTO**  
Vice President of  
Business and Finance



**FRED R. SMITH**  
Comptroller



**HAROLD E. WALKER**  
Vice President of  
Academic Affairs



**D. BANKS WILBURN**  
Dean, Teachers College

## Jobs Available For Freshmen

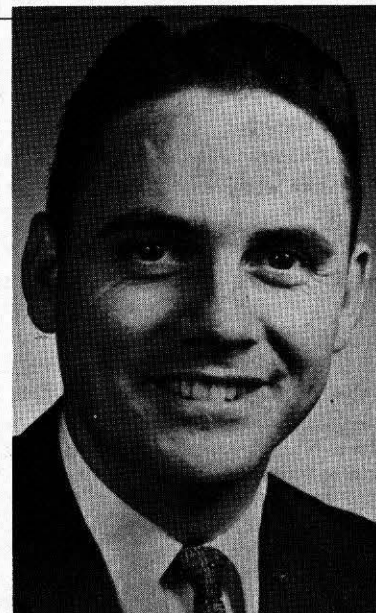
By **NORMA PLASTERR**  
Campus Editor

Freshman who are interested or find it necessary to work will find a variety of jobs available with Bob Alexander, director of placement. Approximately 1,000 students were offered employment last year, he said.

The office will assist any student who especially needs a job to help them finance their education. The procedure to follow in order to be placed as quickly and efficiently as possible is to procure and file an application with the office in Old Main 114 stating the hours that the student will be available and if there is any previous work experience. Some job openings require experience and if this information is on hand, placing a student can be accomplished easily.

There will be many campus jobs available and the student assistant wage has been increased to \$0.70 per hour. Downtown pay runs from \$0.70 to \$3.00 per hour with the median about \$1.10. Jobs offered vary from dishwashing and ditchdigging to sales and secretarial work.

"If I were to emphasize anything, it would be to stress the fact that students should keep the Placement Office informed of his whereabouts and availability. If a student's address has changed, if he wishes to change employment, or if he has changed employment, it should be reported to us immediately," Mr. Alexander said.



**ROBERT P. ALEXANDER**  
Director of Placement

## Service Provided In Library

By **BETTE BURNETT**  
News Editor

More than 125,000 books, periodicals, newspapers, microfilms, and other library material are available to students in the James E. Morrow Library.

The library is named after James Morrow, a president of Marshall College in the 1870's. His son Dwight was born in Old Main and later became ambassador to Mexico. His daughter, Ann Morrow Lindbergh, is the wife of Charles Lindbergh, who flew the first non-stop flight across the Atlantic.

Harold Apel, head librarian, offers these three hints to all incoming Freshman:

(1) Most books are available for home use for a two week period. Consult the card catalogue and get books at the circulation desk on first floor.

(2) Some books with assigned readings are in a reserved book collection for loan for shorter periods of time, usually overnight. These also are found at the desk on the first floor.

(3) Always ask at the reference desk on the second floor for more information and for help in learning to use library facilities.

The services available on the first floor include: the card catalogue which is an alphabetical index to the resources of the

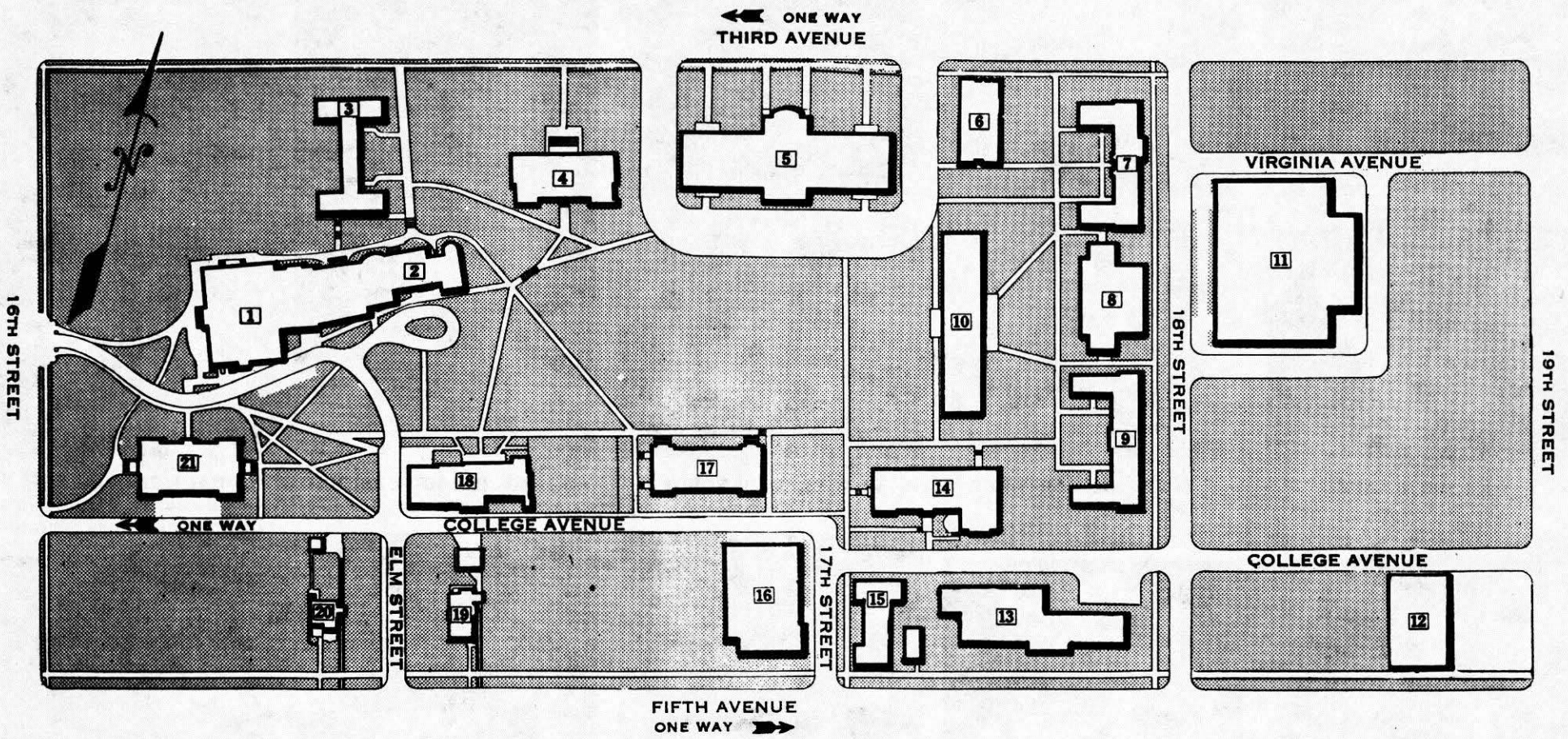
library; the circulation desk where all books in the general collection and the closed shelf reserve will be secured for you, and the open shelf reserve book room where many books which are used for special assignments are placed on open shelves. This room is adjacent to the circulation desk.

On the second floor of the Library you will find librarians at the reference desk at specified hours to help students find information and use the reference collection.

The reference service includes encyclopedias, dictionaries, atlases, periodical indexes, newspapers and periodicals.



# Campus Map



## Key

- |                           |   |   |
|---------------------------|---|---|
| 1 Old Main Building       | 9 Hodges Hall (men)                       | 16 Student Christian Center             |
| 2 University Hall (women) | 10 Lucy Prichard Hall (women)             | 17 Women's Physical Education Building  |
| 3 Old Main Annex          | 11 Health and Physical Education Building | 18 Shawkey Student Union                |
| 4 James E. Morrow Library | 12 Engineering Building                   | 19 Everett Hall (Home Management House) |
| 5 Science Building        | 13 New Residence Hall for Men             | 20 President's Home                     |
| 6 Music Building          | 14 Jenkins Laboratory School              | 21 Northcott Hall                       |
| 7 Laidley Hall (women)    | 15 Laboratory School Annex                |   |
| 8 University Dining Hall  |   |   |

# Orientation Week Program

**Saturday, September 7 -**

8:30 A.M. - All students who did not take the American College Test will report to Science Auditorium to take this Test. Cost \$4.00. (Dormitories will be open on Friday, September 6 for students reporting for ACT. University Cafeterias will open Monday, September 9 for breakfast)

**Sunday, September 8 -**

All Freshmen who did not register in August who have had ACT will report to the Campus and check into dormitories.

**Monday, September 9 -**

8:00 A.M. - All Freshmen who did not register in August will assemble in the Main Auditorium.

9:00 A.M. - Arithmetic Placement Test for all Freshmen in Elementary and Public Certificate Programs - Science Auditorium.

10:15 A.M. - Language Placement Tests for all Freshmen who wish to continue Language begun in High School. French - M 202; German - M 203; Latin - M 210; Spanish - M 216.

9:00 A.M. - Audition for Music - All Freshmen who wish to major in Music.

12:00 Noon Dr. Kingsbury - Music Building.

1:30 P.M. - R.O.T.C. Meeting - All Freshmen Men - Main Auditorium

2:45 P.M. - Academic Life - All Freshmen and Transfer Students - Dr. Walker - Main Auditorium.

Afternoon - Transfer Students report to Campus and check into Dormitories.

7:00 - President's Reception for students who did not register in August - Student Union

**Tuesday, September 10 -**

8:00 A.M. - All Transfer Students meet in Main Auditorium.

8:30 A.M. - Meeting with Academic Deans - All Freshmen and Transfer Students  
 Teachers College - - - Health & Phys. Educ. Building  
 College of Arts & Sciences - Main Auditorium  
 College of Applied Science - Science Auditorium

12:00 Noon - Lunch

1:00-4:00 - Meeting With Academic Advisers.

**Wednesday, September 11**

8:00-12:00 - Registration of Freshmen and Transfer Students - Health & Phys. Ed. Bldg.

12:00 Noon - Lunch

1:00-4:00 - Registration of Freshmen and Transfer Students - Health & Phys. Ed. Bldg.

1:00-4:00 - Freshmen Registered in August return to Campus check into Dormitories.

**Thursday, September 12**

8:00-4:00 - Academic Advising of Returning Upperclassmen in Faculty Offices.

8:00 A.M. - Meeting of all Freshmen who Registered in August - Main Auditorium

Meeting with Personnel Deans - All Freshmen and Transfers

9:00-10:30 - Dean of Women - Main Auditorium

10:30-12:00 - Dean of Men - Main Auditorium

12:00 Noon - Lunch

1:00 P.M. - Academic Life - Dr. Walker - Main Auditorium

2:30 P.M. - President's Convocation and Reception - On Campus & Student Union (Reception for those who registered in August)

7:00-8:00 - Vesper Service

8:30 P.M. - Informal Dance

**Friday, September 13 -**

8:00-4:00 - Freshmen and Transfer Students to buy Books & Supplies in Bookstore.

8:00-12:00 - Registration of Returning Upperclassmen - Full and Part Time - Health and Physical Education Building.

12:00 Noon - Lunch

1:00-4:00 - Registration of Returning Upperclassmen - Full and Part Time - continued.

7:00-9:00 - Registration of Part Time Evening Students Only - Health & Phys Ed. Bldg.

**Saturday, September 14**

8:30-11:30 - Registration of Returning Upperclassmen - continued.

Afternoon - No Scheduled Activities

**Monday, September 16**

8:00 A.M. - Classwork Begins.

**Saturday, September 21**

11:00 A.M. - Last Day of Late Registration.



# Student Chapel Provides Spiritual Center

To The Freshman Class:  
The Campus Christian Center is a new building on campus and possibly unknown to many students as to its facilities and uses. Each student is welcome and encouraged to use these facilities, to participate in the programs of the Campus Christian Fellowship

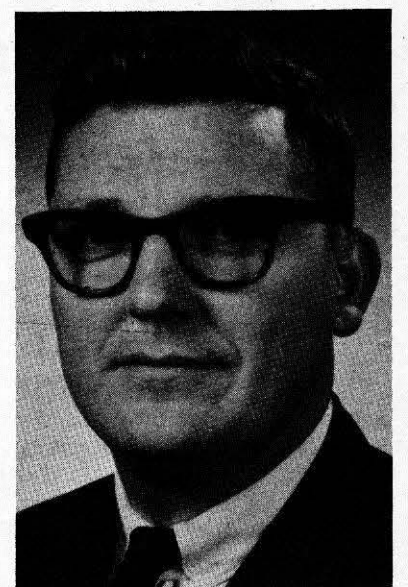
and to call upon and become acquainted with our campus pastors. The Campus Christian Fellowship is an integral part of the total ministry of the Church. Its task is to proclaim the Gospel of Jesus Christ in the academic community.

Its mission here is to present the truth of the Christian Faith amid conflicting viewpoints on the campus, to witness to the redeeming work of Jesus Christ and to help students, faculty and administration recognize their responsibility under God. The purpose of the Campus Christian Fellowship ministry is to develop an inclusive consciously Christian fellowship where all persons are welcome and where each may come to a deeper commitment to Christ. The purpose is not to provide a program, but to build it.

willing to plan, promote and carry out. The program includes a wide variety of interests and discipline study groups, forums, large-scale projects and services to the campus and community. This year the study seminar will be held in New York from Jan. 4 through 29. All students are invited to attend. The theme for the Religious Arts Festival, to take place from April 6 through 2, will be "For the Life of the World" with Feliciano Carino, past chairman of the Student Christian Movement of the Philippines and a graduate of Philippine Christian Colleges and Union Theological Seminary in Manila, as its speaker. The Campus Christian Fellowship Senate is the student governing body for the total campus program. The senate members are composed of the presidents of each college denominational fellowship and three officers from the Campus Christian Fellowship.

question before the senate and make motions. I am looking forward to meeting each of you and sharing together our love and concern for knowledge and our Christian Faith.

Sincerely,  
Rev. Lander Beal  
Religious Student Counselor



REV. LANDER BEAL  
Religious Student Counselor

## Marching, Concert Band Plans Busy Year, Many Appearances

"The marching and concert band is planning an active year", according to Wilbur Pursley, professor of music and director of the concert band. "New uniforms have recently been purchased. They will be used for both bands", he said. In August the band directors will scan applications of incoming freshmen for their background in music. During the week of registration band representatives will talk to those interested in joining the band. The band will be playing during halftime ceremonies at most of the home football games. The band may make one trip

to either the Miami or Louisville football game, Prof. Pursley said. The concert band will be organized at the termination of the football season. Members of the marching band are also members of the concert band. The band will start the new year by playing host to the New York Brass Ensemble in February. They will work with the ensemble in a convocation. On March 5, the concert band will present a musical program, a convocation in Old Main Auditorium and in April the band will conduct a formal evening concert.

During the college year, students are trained primarily in the disciplines of thinking and ideas; the Campus Christian Fellowship program which best serves college students is that which helps to integrate the ideas of these disciplines into a whole in order to develop the individual to his fullest possible stature. This program deals with an exchange and stimulation of ideas through discussion, study and experience. The program primarily consists of that which students believe ought to be done and are

# Cultural Program

<p><b>SEPTEMBER 26</b></p> <p>CONVOCATION Dr. Stewart H. Smith Marshall President</p> <p>Old Main Auditorium</p>	<p><b>OCTOBER 29</b></p> <p>ARTIST SERIES (Student Number) Woody Herman Band Leader</p> <p>Keith-Albee Theatre</p>	<p><b>DECEMBER 9</b></p> <p>ARTIST SERIES (Student Number) Dave Brubeck Quartet</p> <p>Keith-Albee Theatre</p>	<p><b>FEBRUARY 25</b></p> <p>FORUM Travelogue: "Adventures In Indonesia"</p> <p>Old Main Auditorium</p>	<p><b>APRIL 2</b></p> <p>CONVOCATION Varel and Bailly French Singers</p> <p>Old Main Auditorium</p>
<p><b>OCTOBER 10</b></p> <p>CONVOCATION Nayantara Sahgal Author and Lecturer</p> <p>Old Main Auditorium</p>	<p><b>NOVEMBER 14</b></p> <p>CONVOCATION Lasry-Basht Structures Sonores</p> <p>Old Main Auditorium</p>	<p><b>JANUARY 6</b></p> <p>ARTIST SERIES Ballet Folklorico of Mexico Dancers, Singers, Instrumentalists</p> <p>Keith-Albee Theatre</p>	<p><b>FEBRUARY 27</b></p> <p>CONVOCATION The Romeroes Classical Guitarists</p> <p>Old Main Auditorium</p>	<p><b>APRIL 7</b></p> <p>FORUM Travelogue: "Austria In Four Seasons"</p> <p>Old Main Auditorium</p>
<p><b>OCTOBER 17</b></p> <p>FORUM "Under Milkwood" Comedy Drama</p> <p>Old Main Auditorium</p>	<p><b>NOVEMBER 16</b></p> <p>FORUM Celeste Holm Actress</p> <p>Old Main Auditorium</p>	<p><b>FEBRUARY 11</b></p> <p>FORUM Mario Amadeo Argentine UN Representative</p> <p>Old Main Auditorium</p>	<p><b>MARCH 3</b></p> <p>FORUM Emily Kimbrough American Author</p> <p>Old Main Auditorium</p>	<p><b>APRIL 9</b></p> <p>CONVOCATION Marlboro Trio Chamber Music</p> <p>Old Main Auditorium</p>
<p><b>OCTOBER 17</b></p> <p>CONVOCATION Dr. Patrick Gainer Folk Singer and Lecturer</p> <p>Old Main Auditorium</p>	<p><b>NOVEMBER 18</b></p> <p>ARTIST SERIES Schola Cantorum</p> <p>Keith-Albee Theatre</p>	<p><b>FEBRUARY 14</b></p> <p>ARTIST SERIES Vienna Symphony</p> <p>Keith-Albee Theatre</p>	<p><b>MARCH 5</b></p> <p>CONVOCATION University Band</p> <p>Old Main Auditorium</p>	<p><b>APRIL 27</b></p> <p>FORUM Sir Julian Huxley Scientist and Author</p> <p>Old Main Auditorium</p>
<p><b>OCTOBER 24</b></p> <p>ARTIST SERIES "A Man For All Seasons" Long-Run Broadway Hit</p> <p>Keith-Albee Theatre</p>	<p><b>NOVEMBER 21</b></p> <p>FORUM Art Buchwald Newspaperman and Wit</p> <p>Old Main Auditorium</p>	<p><b>FEBRUARY 20</b></p> <p>CONVOCATION New York Brass Quintet Chamber Music</p> <p>Old Main Auditorium</p>	<p><b>MARCH 12</b></p> <p>CONVOCATION Ethel J. Alpenfels Anthropologist</p> <p>Old Main Auditorium</p>	<p><b>APRIL 30</b></p> <p>CONVOCATION Stephen Spender Poet</p> <p>Old Main Auditorium</p>
<p><b>OCTOBER 26</b></p> <p>FORUM Travelogue: "Legendary Mediterranean"</p> <p>Old Main Auditorium</p>	<p><b>DECEMBER 5</b></p> <p>FORUM Robert St. John Author, Lecturer</p> <p>Old Main Auditorium</p>	<p><b>FEBRUARY 23, 24, 25</b></p> <p>LIFE PLANNING WEEK</p>	<p><b>MARCH 13</b></p> <p>ARTIST SERIES Detroit Symphony</p> <p>Keith-Albee Theatre</p>	<p><b>MAY 1</b></p> <p>ARTIST SERIES (Student Number) "The Hollow Crown" Stradford Players</p> <p>Keith-Albee Theatre</p>





**NEAL B. WILSON**  
Athletic Director

## Gridiron, Cage Prospects Sparking Optimistic Note

By **RICK TOLLEY**  
Managing Editor

A feeling of optimism can be noted around the Marshall football and basketball camps prior to the opening of the 1963-64 seasons.

A good part of this optimism can be attributed to the arrival of the new basketball coach, Ellis Johnson. An outstanding athlete in both high school and college, Johnson has also had a successful career of high school and college coaching and has much experience to call upon as he begins his first season as Big Green head basketball coach.

Another reason for the optimism is the fact that Coach

Charlie Snyder will greet more returning lettermen this season than he has had in any of his previous years here. Twenty-two veterans are expected to report for fall practice which begins September 1.

Coach Snyder may have some headaches, however, for he must find replacements for some key men lost last spring through graduation. Replacements for quarterback, Bob Hamlin, and center, Roger Jefferson, are the main problems, and may result in some personnel changes by Coach Snyder.

Potentially better this season than in the past, the Big Green faces a tougher schedule than in previous years. Three of the four teams which fell before Marshall last season have been replaced. Kentucky State, Miami of Ohio, and the University of Buffalo take their places on the Green slate this fall.

A completely renovated Fairfield Stadium awaits the Big Green's arrival. Condemned by city and county officials last fall after a wave of blistering criticism from Cincinnati newspapers, the facility is presently receiving a \$60,000 face-lifting.

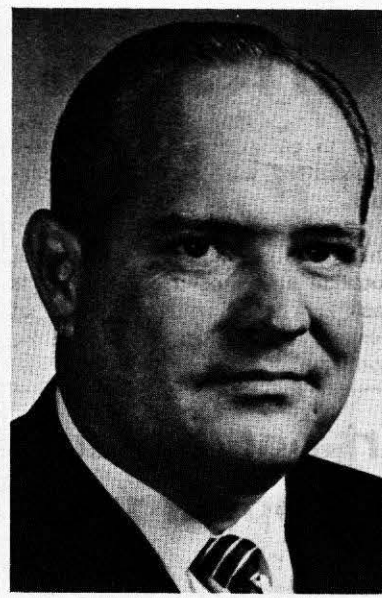
On the basketball outlook, 10 veterans are returning for Coach Johnson's first season, among them, the five sophomore "Baby Bombers". The five sophomore started in most of the games following Coach Rivlin's resignation early last season.

One of the major problems facing Coach Johnson will be replacing graduated Phil Carter, last season's leading scorer and rebounder.

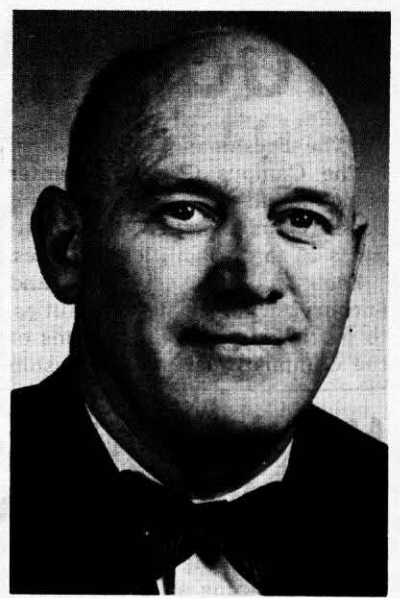
The lack of a tall man could be a weakness for the team. The tallest is 6.7 Larry Williams, who will probably be called upon to handle the center position. This post will be relatively new for Williams since his high school graduation, for his play at Marshall has been primarily at the forward post.

With a faster, more experienced squad, Big Green basketball is potentially stronger than last season. The opener here December 7 against Morris Harvey should be an interesting one, but the team will have to prove their talent against a tough schedule throughout the season.

It is a promising year for the University with stronger football and basketball teams and a new basketball coach, and the opening of each of the seasons is eagerly awaited.



**CHARLIE SNYDER**  
Football Coach



**ELLIS JOHNSON**  
Basketball Coach

### MARSHALL UNIVERSITY

#### 1963 Football Schedule

Sept. 21	Morehead State	8:00	Home
*Sept. 28	Miami University	2:00	Away
*Oct. 5	University of Toledo (ROTC Day)	8:00	Home
Oct. 12	University of Buffalo	1:30	Away
Oct. 19	Kentucky State (High School Band Day)	8:00	Home
Oct. 26	University of Louisville	8:00	Away
*Nov. 2	Western Michigan U.	1:30	Away
*Nov. 9	Bowling Green (Homecoming)	2:00	Home
*Nov. 16	Kent State	2:00	Away
*Nov. 23	Ohio University (Parents' Day)	2:00	Home

\*Mid-American Conference Games

All home games are played on Saturday at Fairfield Stadium.

## Freshman Rules Take Effect Sept. 16, According To Gainer

By **JIM RAFTER**  
Feature Editor

Freshman rules go into effect on Monday, Sept. 16, according to Ken Gainer, president of the student body. Although there is a policy against hazing, there are certain regulations that freshmen must follow until Saturday, Sept. 28.

Chosen by the Freshman Activities Committee, the freshman rules are enforced by a group of upperclassmen known as the Freshman Rules Enforcers.

If you are caught violating a freshman rule by an enforcer, he will give you a ticket, which you must then submit to the Freshman Court. A survey shows that the Court has a perfect conviction record.

During the period that the rules remain in effect you must wear your beanie and name tags, carry your handbooks and schedules at all times during the day

from 8 a.m. until 5 p.m., and to all freshman activities.

Exceptions to this rule include that freshman men must not wear their beanies in classrooms or other buildings on campus. Also, you are not permitted to wear any article of clothing that pertains to any school other than the University.

You must walk on the walkways only, and shall not cut campus at any time for any reason. You are also required to speak to all persons you see on campus.

You will be required to sing or recite upon request, at any time, the "Alma Mater", the school song, the year in which Marshall was founded, and the names of University officials.

Freshman are not permitted to sit in the booths by the windows in the Student Union, but no matter where you sit, upon the request of an upperclassman, you must relinquish your seat.



### MARSHALL UNIVERSITY

#### 1963-64 Basketball Schedule

Sat.	Dec. 7	Morris Harvey	Home
Wed.	Dec. 11	Eastern Kentucky	Away
Sat.	Dec. 14	Ohio University	Home*
Tues.	Dec. 17	Morehead	Away
Sat.	Dec. 21	St. Francis (Pa.)	Away
Sat.	Dec. 28	Varsity-Alumni	Home
Sat.	Jan. 4	University of Toledo	Home*
Sat.	Jan. 11	Miami University	Home*
Tues.	Jan. 14	Morris Harvey (Charleston Civic Center)	Away
Sat.	Jan. 18	Ohio Wesleyan	Home
Sat.	Jan. 25	St. Francis (Pa.)	Home
Wed.	Jan. 29	Kent State	Away*
Sat.	Feb. 1	Western Michigan	Home*
Wed.	Feb. 5	Ohio University	Away*
Sat.	Feb. 8	Eastern Kentucky	Home
Tues.	Feb. 11	Miami University	Away*
Sat.	Feb. 15	Kent State	Home*
Tues.	Feb. 18	Morehead	Home
Sat.	Feb. 22	University of Toledo	Away*
Mon.	Feb. 24	Bowling Green	Away*
Thurs.	Feb. 27	Steubenville	Home
Sat.	Feb. 29	Loyola of Chicago	Away
Mon.	March 2	Western Michigan	Away*
Sat.	March 7	Bowling Green	Home*

\*Mid-American Conference Games

All Home games at Memorial Field House, 8:15 p.m.

## Freshman Guides Are Named; Will Assist Incoming Students

The Freshman Guides Committee has selected 55 guides for September, 1963. They will conduct tours of the campus, dispense general information to freshman, and help the new students to familiarize themselves with the University.

The 31 seniors chosen are: Edith Ann Alexander, Nitro; Ivan Ash, Barboursville; Betty Banda, Weirton; Carl W. Bragg, Milton; Shirley Campbell, Corton; David R. Carper, Spencer; Judith Ann Clayton, Dunbar; Leo G. Grob, Jr., Wheeling; Nina Hatfield, Charleston; Carroll Hoffman, Red House; Sally Lynn Jewell, South Charleston; Thomas R. Jividen, Dunbar; Sue Ellen McElhinny, Elkview; Kaye Mullen, South Charleston; Lily Wray Naylor, Clendenin; Marna Paulovicks, Wheeling; Thomas D. Robinson, Gary; Barbara Dale Smith, Welch; Ted Wiley, Lewisburg; Marda Wilson, Parkersburg; Gloria Jean Chafin, Mary Ursula Connell, Michael H. Ferrell, Carol Lynn Fields, Bertie Anne Humphreys, Patricia Kidd, Donna Gail Lytle, Gwendolyn G. Varnum, and James Carlos Wilmer, Jr., all of Huntington.

The 16 juniors chosen are: Bob Altomare, Weirton; Marion Eugene Casto, Charleston; Bill Hedrick, Lewisburg; Brenda Hubbard, Williamson; Roy Emmett Huffman, Paden City; Robert McDonald, Grantsville; Anne Mecum, St. Albans; Kay Marie Sage, Bluefield; Donna Sturgeon, Ashton; Ronald Brandon, Ladonna Byer, Donna Hughes, Mary Margaret Loemker, Rebecca A. McDaniel, Steven S. Nelson, and June E. Patton, all of Huntington.

The eight sophomores are: Kathryn Jo Bolen, Mt. Hope; Jean Cattano, Wheling; Catherine Imbrogno, Charlton Heights; Janice Richards, Nitro; Patricia Ann Taylor, Charleston; Carolyn Fleming, Jane McCaskey, and John A. Wright, III, all of Huntington.

### Beanies, Handbooks At Union

Freshman handbooks, beanies, and name tags must be purchased and are available in front of the Student Union. The price for all three will be \$2.00, according to Ken Gainer, student body president.