

Marshall University

Marshall Digital Scholar

The Parthenon

University Archives

9-11-1949

The Parthenon, September 11, 1949

Marshall University

Follow this and additional works at: <https://mds.marshall.edu/parthenon>

Recommended Citation

Marshall University, "The Parthenon, September 11, 1949" (1949). *The Parthenon*. 5122.
<https://mds.marshall.edu/parthenon/5122>

This Newspaper is brought to you for free and open access by the University Archives at Marshall Digital Scholar. It has been accepted for inclusion in The Parthenon by an authorized administrator of Marshall Digital Scholar. For more information, please contact zhangj@marshall.edu, beachgr@marshall.edu.

CAMPUS WELCOMES CLASS OF '54

Rejoice! Your College Is Now Member of NCAA

With the addition of Marshall College to the National Collegiate Athletic Association, membership jumps past the 400 point. That means over 400 membership schools or conferences conduct an all-around athletic program of the highest standard.

On April 25, 1950, the Athletic Board asked President Stewart H. Smith to submit application to the NCAA. And, on May 4, 1950, the formal application was made and accepted.

Luther F. Poling, Athletic Director, explained that this does not mean that we have to play NCAA colleges; we are allowed to play any school that conducts their athletic program in conformity with the standards of the NCAA. Marshall becomes eligible for competition in this association January 1, 1951. But, as of September 1, we have achieved active membership.

The NCAA is not a play conference. By this we mean that we play in our regular Ohio Valley Conference and if recognized as one of the top teams of the country, we are eligible for a championship play-off.

Sports covered by the NCAA rules run the gamut from Lacrosse to football stopping all along the way at tennis, baseball, swimming, wrestling and any other sport that you can mention. Marshall is eligible to enter any outstanding athlete in these events to participate for NCAA championship.

The National Collegiate Athletic Association maintains for its members a statistic bureau. At any given time a member may inquire about the standing of his team, or any individual player in relation to the rest of the NCAA members.

Marshall is included in the NCAA District 2. This includes Pennsylvania, New York, West Virginia and Maryland. The winning of a play-off in our district would mean playing the Eastern (Continued on Page 3)



MISS PARTHENON III was a freshman! Pretty Barbara Ann Price, Madison Freshman, was chosen last spring from 10 of Marshall's fairest co-eds for the honor of becoming Miss Parthenon.



DR. STEWART H. SMITH
President of Marshall College

President Smith Extends Greetings To Newcomers

To the new Marshall Student:

The faculty and staff of Marshall have an enviable record for taking a friendly interest in you as a person. This is likewise true of the upperclassmen. We want you to be happy here and to enjoy your college life. These first few days are important ones for you. Enter into all of this week's activities with enthusiasm and good spirit. Much of your success here will depend upon your attitude and your willingness to get the most from your experiences.

College life is a new experience for you. Everyone, as you will see, will be eager to help you. You are here to get an education; therefore, you should plan your class schedule thoughtfully and carefully. I hope that each one of you has a goal in mind. Unless you have, you will probably flounder around thus losing valuable time. Prepare your assignments well from the beginning. Impress upon your teachers your desire to succeed in everything you do.

You are now a real part of the college. This is a great responsibility. (Continued on Page 3)

STUDENT GUIDES WANT TO HELP YOU GET AROUND

Hi! Frosh. Lost? Well that isn't necessary. There are many people around here just to help you. In fact that is the purpose of this week.

You as a class have been divided into twelve groups. Each of these groups has two upper classmen who are serving as group guides. If there is anything that you want to know, read below and find out who your guides are; then call on them for help. If they are busy there will be a section leader around to answer your questions.

What are section leaders? Well these are three upper classmen each of whom is in charge of four of the above mentioned groups. These four groups compose what we call a section. Then there is the chief guide Blanche Hamed, Green Bank, Sr., whom you will probably find in the guide headquarters in room 108 in Old Main.

These students are at your service. Feel free to contact any of them when in need of information concerning your schedule, social activities, location of buildings, or other questions which might arise.

Groups One through Four make up Section One, whose leader is Bill Blevins. Group guides are: I—Jean Stephenson and Armin Clark; II—Christine Haga and Rex White; III—Nancy Cooper and Carl Wade; IV—Pat Fortner, Richard Thorton.

Section Two is composed of Groups Five through Eight, and the section leader is Marylyn Johnson. Group leaders are: V—Mary Maynor and Roger McVey; VI—Lois Dean and Bob Nunley; VII—Sharon Workman and Arthur Pfeifer; VIII—Salley Darst and Frank Andre.

Don Gullickson is leader of Section Three, which consists of groups Nine through Twelve. Group leaders are: IX—Eleanore Reece and John Gallaher; X—Barbara Elkins and Richard D'Amour; XI—Lavern Wood and George McCarrigan; XII—Phoebe Hapner and Glenn Koch.

Leading the transfer groups are: XIII—Nancy Cook and Robert Fox; XIV—Elouise Goheen and Dave Daugherty.

Alternate leaders are Joan Sommerville, Jeanne Foote, Frances Pais Mosely Winkler and Charles Winkler.

Hospitalization Is Voluntary

A new voluntary insurance plan has been arranged for all students, payable at time of registration, according to Mr. Luther E. Bledsoe, registrar.

This is purely a voluntary plan which the student may or may not carry. The Committee on Student Health and the Administration strongly urge each student to have some sort of hospital and accident insurance, either with the North American Assurance Society of Virginia, a group policy recommended by the college officials, or one of the other group policies of the student's choice.

The North American Assurance (Continued on Page 3)

Freshman Week Is Time For Fun And Friends

Welcome to Marshall, Class of '54! Upperclassmen, the administration, faculty and campus organizations are glad to see you and hope that this week—Freshman Week—will start you on a college career that will lead to a lifetime of benefits. As you will see, Marshall is a friendly college—"large enough but small enough". Large enough for a broad curriculum but small enough for personal attention.



BLANCHE HAMED
Chief Guide



WILLIAM E. BLEVINS
Section Leader I Guide



MARILYN JOHNSON
Section Leader II Guide



DON GULLICKSON
Section Leader III Guide

Elsewhere in this paper, your first edition as a student of The Parthenon, you will find instructions and explanations of tests, assemblies and registrations. In college you will find that you are expected to Work—spelled with a capital W—but this is Freshman Week and no better time to mix and mingle, meet new friends and have fun!

Monday night, the Pan-Hellenic Council, representing the women's Greek organizations, and the Inter-Fraternity Council, representing the men's Greek organizations, will hold a dance in the Student Union. This is an annual affair and an annual success. A prize is always given to the typical freshman woman and the typical freshman man, and you just might be the lucky winner this year.

Dr. Stewart H. Smith, president of Marshall College, will have his reception for freshmen in the Student Union Tuesday evening. He is just as eager to meet you as you are to meet him. There will be other members of the faculty there who want to meet you, too.

Plenty of energy will be needed for the "record hop" at the Greenhouse right after the President's reception. It is to be given by the Independent Student Association, representing the non-Greek organizations. Although this is a "hop", there is no law against skipping and jumping—it's all for fun and all for you.

Wednesday evening there will be a movie in the Greenhouse, and it will be a good one too. After that there will be a variety show, which is to be a big surprise for you. We'll see you there.

This is just a sneak preview of the social side of your freshman orientation. College isn't all academic and no social or all work and no play. If it were, college life would be mighty dull. Do your academic work well, then join the crowd and "Enjoy Yourself".

Learn Definition Of "Point System"

The semester hour is the basis for college credit earned. A semester hour is the credit received for taking a subject one hour per week for one semester of eighteen weeks. Laboratory courses require two periods per week for eighteen weeks for each semester hour of credit.

The quality of a student's work is indicated by quality points as follows:

- A—Four quality points for each semester hours credit.
- B—Three quality points for each semester hours credit.
- C—Two quality points for each semester hours credit.
- D—One quality point for each semester hours credit.

THE PARTHENON

STUDENT NEWSPAPER OF
MARSHALL COLLEGE
Established 1896

Full-leased wire of the Associated Press Off-campus subscription — \$5.00 per year. Entered as second-class matter May 29, 1945, at the Post Office at Huntington, West Virginia, under Act of Congress, March 3, 1879.

Published semi-weekly during school year and weekly during summer by Department of Journalism, Marshall College.

16th Street and 3rd Avenue
Huntington, W. Va.

Member, W. Va. Intercollegiate Press Association, 1949-50

FRESHMAN REGISTRATION
EDITION

Editor-in-chief

GEORGE HANNA

Managing Editor

JACK MUNSEY

Staff Photographer

KEN LYONS

Faculty Adviser .. W. PAGE PITT
Ph. 27092 Office 33411 Ex. 27

COMMERCIAL PTG. & LITH.

Administrative Officials Are Helpful—Learn To Know Them



DR. J. F. BARTLETT
Dean, College of Arts and Sciences



DR. D. BANKS WILBURN
Dean, Teachers College



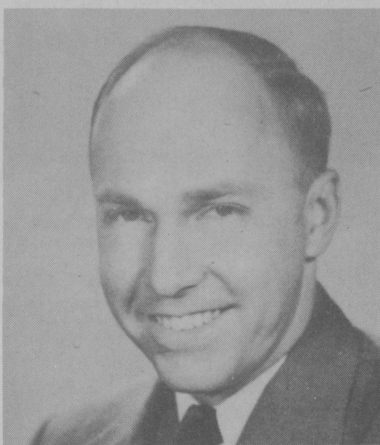
LUTHER E. BLEDSOE
Registrar and Director of Admissions



FRED R. SMITH
Comptroller and Business Manager



LILLIAN HELMS BUSKIRK
Dean of Women



DAROLD LEE SHUTT
Dean of Men

It's College Now

"It's college now — not high school". We hope that doesn't sound like a brash sophomore looking down his nose at "Those High School Kids". It's just that we made some mistakes upon entering college that we might have avoided had we been forewarned by a sincere friend.

Listen to this from a senior woman, Pat Riley, a Huntingtonian: "Tell them about my personal education on 'combing hair'. When I was in high school I think I did nothing but comb my hair, on my way to my locker, before class, during class, between classes, and on my way to lunch. Then when I came to Marshall I was never so surprised in my life. I never saw a girl with a comb in her hand outside the rest room."

Of course, that's just a little personal observation of Pat's. But it's the LITTLE habits that blend together to make a freshman a well-adjusted college student or a poorly-adjusted one.

Many a male has blushed crimson because those bright remarks which brought laughter and admiration from the "femmes" in high school classes bring only the hard realization that in college bright remarks in class are considered juvenile, and are hard to live down.

Whereas in high school if we cut classes we had to get an "add-mit" from the principal's office, in college if we cut classes successively we get an "FIW", Failure-Irregular Withdrawal.

Nothing can compare to the freedom that we have in college. Tuesday we may have only one class. Since that takes only one hour, the rest of the day is ours, to play tennis, to swim, to play cards in the Student Union (sometimes referred to as the Student Onion) . . . or STUDY. In high school we were under strict supervision all day, with only lunch hours free.

Indeed, do not neglect to play tennis, to swim, and to meet friends in the Student Union. But beware, lest, as some of us did, exam time rolls around and we have for auction "one head—full of Bridge and Canasta". This may sound exaggerated but some of your best friends may be probational students by not learning to budget time wisely.

We have mentioned some of our own mistakes, and hope you may profit by these. But these are only small beginnings of the personal conduct, academic diligence, and social pleasure that will make or

WANT TO FIND PART-TIME WORK?

One fourth of the students at Marshall work part of the time in order to help defray expenses. While the social Deans recommend that you not work your first semester or two it might be well to get acquainted in the Student Employment and Placement Office located in the Office of the Dean of Men, Main 110.

Mrs. Eleanor Adkins, employment clerk, will be happy to register your name and qualifications together with the hours you will be available for work as soon as you have completed registration each semester.

Student jobs range from baby sitting to truck driving with the average rate of pay approximately 60c per hour for everything except specialized work like baby-sitting. Sitters charge whatever the traffic will bear. Student assistant positions in the departments of the college are usually obtained by the upper classmen who are acquainted with the staff. These positions require office experience as a rule.

When you reach that lofty pinnacle of success and become the proud possessor of a sheepskin you will no doubt want assistance in job placement. Again, the Student Employment and Placement Office will be on hand to arrange interviews and write letters of recommendation. You must be registered with the office in order to benefit from its services, so don't delay a visit to Main 110.

break college life.

If you remember that the "little things" grow into "big things" we're sure that your life here will be full and happy.

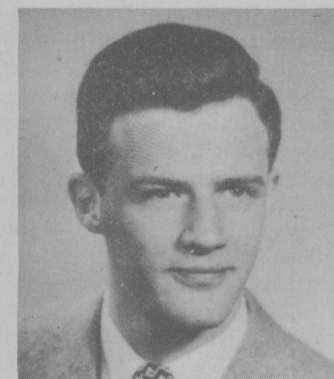
—SHARON WORKMAN

Your Student President Says:

Dear Freshmen:

To you, the members of The Class of 1954, the upper-classmen extend a hearty and cordial greeting. We welcome you to the Marshall campus with an earnest hope that you may enjoy four pleasant years of development amidst the friendly atmosphere.

The many phases of college life will affect each of you differently. We urge that you take advantage of as many as possible of the academic and extra-curricular opportunities available, integrating them into a well-balanced program for an active college life.



DAVID DAUGHERTY, Huntington sr., is president of the student body.

grating them into a well-balanced program for an active college life.

Student government belongs to you and to me. Its purpose is to provide an instrument which will make it possible for all students to have a voice in any program that would make Marshall a better college. Your participation animates and directs it.

You are Marshall College. May you, during your short stay here, become forever imbued with her spirit of cooperation and achievement.

Most sincerely yours,
David H. Daugherty

LIBRARY IS AT YOUR SERVICE

Did you know that there is a place on this campus where you can find out about everything from coeliacomesenterics to what to wear on tomorrow night's date? That place is your own James Morrow Library. All you have to do is know how to use it. And that's the objective of this article. Let's start with these five simple rules:

1. Know how to use the card catalog. This is located immediately east of the main desk in the reading room and is a three-way cross-index. This means you may find a book by looking under the name of the author, the title of the book or the subject. (All subject headings are in red).

2. Write the correct call number, which is given at the upper left-hand corner of the card, on the slips provided and take it to the main desk. The attendant will get the book or tell you where it is.

3. Write your name and address legibly on the card inside the front cover.

4. Have your identification ready for the attendant to check. Your treasurer's receipt, social security card or driver's license are best.

5. Have your books stacked so that they may be easily checked at the door. Zipper notebooks should be open.

Just a couple of suggestions:

If you get stuck, ask a librarian or student assistant to help you. Often they will know just the book you need.

Take a tour of the library. Find the atlases, encyclopedias, dictionaries, reference books, etc., so you will know where they are when you are in a hurry.

Nationally known artists and entertainers come to Marshall on the Artists Series and Community Forum programs.

CENTRAL FILES TELL STORY OF COLLEGE LIFE

A few days, weeks or months ago when you completed your application for admission to Marshall College you started a collection of information about you which, when combined with similar information about all the other entering students, constitutes the Central File. The Director of Admissions contributes the next item when he analyzes your high school or previous college record and fills in a summary sheet of the credits which are accepted.

This folder of material will be used by your advisor when he helps you plan your schedule during this first registration. Your application blank and your credits from other schools furnish the advisor with background information he needs to assist you in making a wise choice of curriculum and courses.

The scores you make on the tests you take during Freshman Week are added to the Central File. Your advisor, instructors and deans consult your folder frequently to gain the information they need to help you and unless these test scores give a true picture of your ability they are not of much assistance to those who counsel you.

At the end of this term and each term you attend the grades you earn will be entered on a cumulative grade report which will show term totals of credit hours and honor points as well as cumulative totals for your complete grade record at Marshall College.

To supplement the scholastic information in the Central File other records of your activity on the campus are necessary. These include a dormitory rating sheet showing various personal traits, a record of any part time jobs you have while a student and participation listing of the different organizations on the campus which shows your activities as a member or an officer.

The administrative offices and faculty of Marshall College are convinced that the Central File will help them to help you not only during your stay here but also to help you find employment which suits you as a person.

Campus Greeks Send Greetings

On behalf of the fraternities at Marshall, the members of the Interfraternity Council wish to welcome all freshmen and transfer students to the campus.

At the present time there are eight social fraternities located at Marshall College. These are: Alpha Sigma Phi, Sigma Phi Epsilon, Pi Kappa Alpha, Phi Tau Alpha, Lambda Chi Alpha, Tau Kappa Epsilon, Kappa Alpha and Tau Epsilon Phi.

The women's social sororities are: Pi Kappa Sigma, Alpha Sigma Alpha, Alpha Sigma Tau, Sigma Sigma Sigma, Alpha Xi Delta, and Delta Sigma Epsilon.

Consider "going" fraternity. If you are a leader, the fraternity will give you an opportunity to develop that leadership for yourself. If you are not a leader, yet have ambition, the fraternity will aid you by attempting to develop that leadership.

Marshall is a fully accredited college and its credits are accepted by all other colleges and universities.

First Big Green Game With Morehead

Five Home Games Listed On Tough Fall Schedule

Willard "Pete" Pederson will start his regime as head football coach with a ten-game schedule, boasting five home games and featuring the homecoming tilt with John Carroll on October 28.

The season is scheduled to get underway on the night of September 23 against Morehead and end on November 25 against Ohio University at Athens. There will be four home night games altogether.

The prospects for the season look good, as Coach Pederson and his assistants introduce the T-formation here for the first time in the Thundering Herd's history. Since several lettermen were lost by graduation, Coach Pederson expects the team to get off to a slow start, but once the Herd starts thundering it will be "Katie bar the door" the rest of the time.

One of the key factors to a successful T-formation team is the quarterback. And this year these duties will be placed in the hands of Ogden Thomas, Kenny Wheeler (also a punter deluxe), J. C. Henson, and Jack Dick. Thomas has thus far been the standout at this position. Other backfield men that should shine this year are Summers Jarrett, Dick Horten, Jerry Boyles, and Eddie Prelaz, all half-backs; and Frank Mazza, chief candidate for fullback.

No backfield could operate without its forward wall and things look like the line will be able to handle its share of the game. There will be such stalwarts as Jim Rockwell, Larry Hall, Al Funari, Dan Wickline, Bob Sang, John Allen, Hercile Barrett, and several others returning that should form a solid front barrier.

Another "first" in the Marshall football history will feature the Freshman team that is to be formed this fall and play a complete schedule.

Approximately 70 freshmen are expected to try out, of which around 15 will be put on the varsity squad and the remainder composing the freshman squad.

The complete 1950 varsity Football schedule:

- Sept. 23—Morehead Home*
 - Sept. 30—Eastern Ky. Home*
 - Oct. 7—Western Ky. Away*
 - Oct. 14—Murray Away*
 - Oct. 21—Youngstown Home*
 - Oct. 28—John Carroll Home (Homecoming Game)
 - Nov. 4—Tenn. Tech Home*
 - Nov. 11—Evansville Away
 - Nov. 18—Dayton U. Away
 - Nov. 25—Ohio U. Away
- *—Night Games.

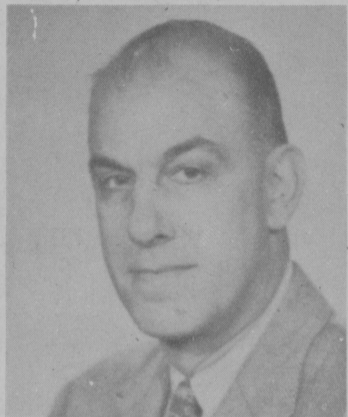
Freshman Football Team Will Play Scheduled Games

Athletic Director Luther Poling has released the Freshman football schedule or at least three games of it. Several others will probably be added, but the following are the sure-scheduled games.

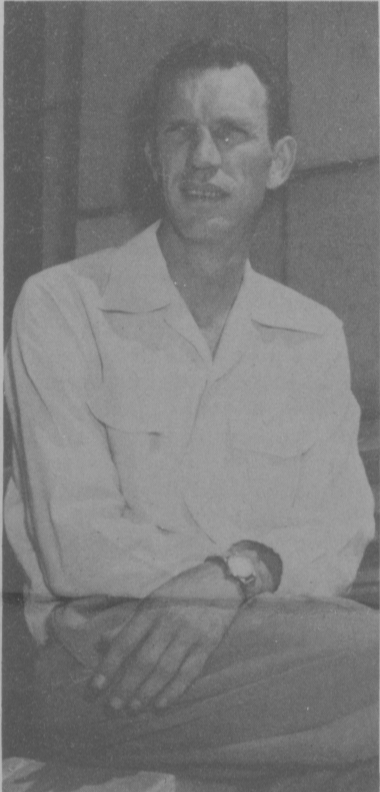
1950 FRESHMEN FOOTBALL SCHEDULE

- Sept. 23 — Greenbrier Military School—Lewisburg, W. Va.
- Nov. 10—Cincinnati University—Cincinnati, Ohio.
- Nov. 17—Ohio University—Huntington, W. Va.

James E. Morrow library on the campus subscribes to over 400 magazines.



LUTHER POLING
Director of Athletics



WILLARD "PETE" PEDERSON
Head Football Coach



CAM HENDERSON
Head Basketball Coach

(Continued from Page 1)

PRESIDENT SMITH

It is now up to you to help keep the reputation of Marshall College untarnished. Whatever you do will reflect upon the college. I like to think that each one of you will become a loyal and devoted member of our great student body.

This paper has been prepared to assist you in making a good start. Read it through. Its contents will be both valuable and helpful to you.

I wish to extend to you my personal good wishes for a happy and successful year.

Stewart H. Smith
President

'50-'51 CAGERS WILL PLAY IN NEW FIELD HOUSE

The 1950-51 basketball schedule for the Big Green is composed of 29 games, 16 at home, which will be played in the new Memorial Field House, and features 12 new opponents and three tournaments.

The Cam Henderson men will have to face such opponents as Ohio University, Brigham Young, William and Mary, Arkansas A & M, Eastern Kentucky, and many other highly-rated teams from all over the nation.

Other than the regular Ohio Valley Conference Play-off tournament which is scheduled for February 22, 23 and 24 in Louisville, the Big Green will have two four-team tournaments at home in December.

Coach Henderson potentially has one of his strongest combines on tap for this extensive schedule. With men like Bruce McLin, Don Brown, Bob Koontz, Jim Lamb, Syd King, Ed Lambert, Carl York, and several other regulars of last year returning plus several freshmen possibilities, the Big Green has a good chance of compiling its best season yet.

The complete Big Green Basketball schedule for 1950-51:

- Dec. 2—Fairmont St. Home
 - Dec. 7—Geneva Col. Home
 - Dec. 9—Brigham Young .. Home
 - Dec. 14-15 — Murray *, West Texas, George Pepperdine, (tournament, two winners play, two losers play).
 - Dec. 19—William & Mary .. Home
 - Dec. 23—Beloit College Away
 - Dec. 26—Arkansas A M .. Home
 - Dec. 29-30—Beloit, Miami, Eastern Ky. (two doubleheaders)
 - Jan. 8—Ohio U. Home
 - Jan. 11—Morris Harvey Away
 - Jan. 13—Morehead St.* Home
 - Jan. 17—Eastern Ky.* Away
 - Jan. 20—Miss. Southern Home
 - Jan. 27—Tenn. Tech* Home
 - Jan. 31—Evansville Col. Away
 - Feb. 1—Tenn. Tech* Away
 - Feb. 3—Murray St.* Away
 - Feb. 7—Morris Harvey Home
 - Feb. 10—Eastern Ky.* Home
 - Feb. 13—Ohio U. Away
 - Feb. 15—Morehead St.* Away
 - Feb. 19—John Carroll U. .. Home
 - Feb. 22-23-24—OVC Tournament in Louisville, Ky.
 - Mar. 2—Akron, U. Away
 - Mar. 3—Mt. Union Away
- *—OVC game.

(Continued from Page 1)

HOSPITALIZATION

Society of Virginia offers a group policy covering hospitalization and surgical fees, which includes operating room fees, anaesthetic, laboratory, and ambulance fees, use of drugs and dressings, oxygen tent, and radium treatment.

This coverage is paid for by student's hospitalization fee of \$5.00 per semester at the time of registration, Mr. Bledsoe concluded.

(Continued from Page 1)

NCAA

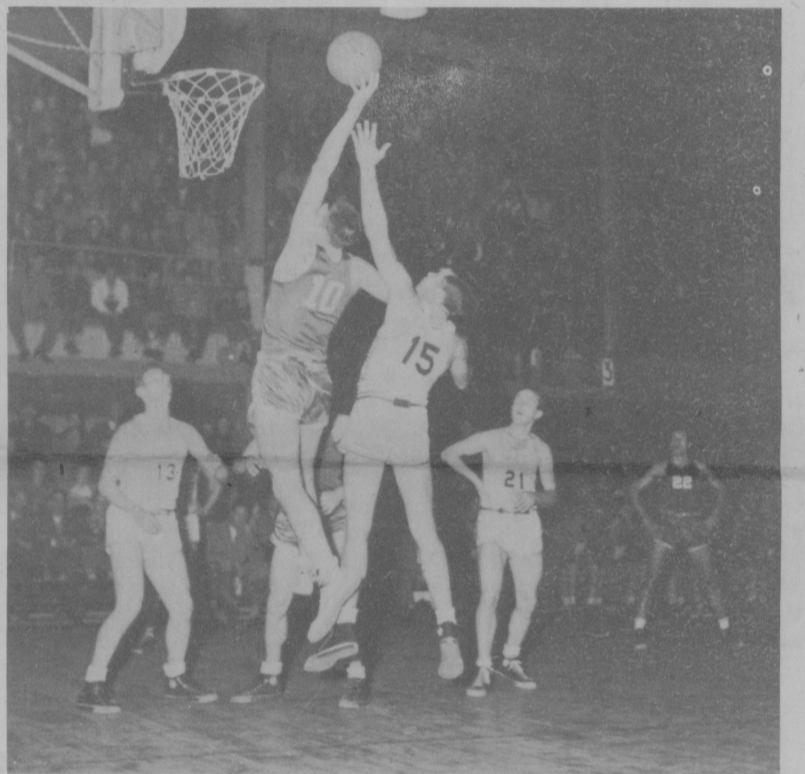
Championship and finally an Eastern-Western championship game.

"All schools and conferences participating in an all-around good athletic program subscribed to and are members of the NCAA," said Luther F. Poling, Director of Athletics.

It is now possible to start Marshall in Nursery School, finish with a Master's Degree.



THE BIG GREEN this season will utilize the Split-T Formation for the first time under the direction of Coach "Pete" Pederson.



BASKETBALL GAMES this year will be played in the new Memorial Field House which is nearing completion now. Wherever the Herd plays, you can count on fast ball, big crowds.



EVERY HOMECOMING GAME has its Queens. Last year these four bonnie lassies, all members of the Sigma Sigma Sigma sorority, reigned over their classmates. Shown above are Jo Anne Mayes, freshman; Jerry Lee Shank, sophomore; Gloria Pack, junior; and Pat Lusky, senior.

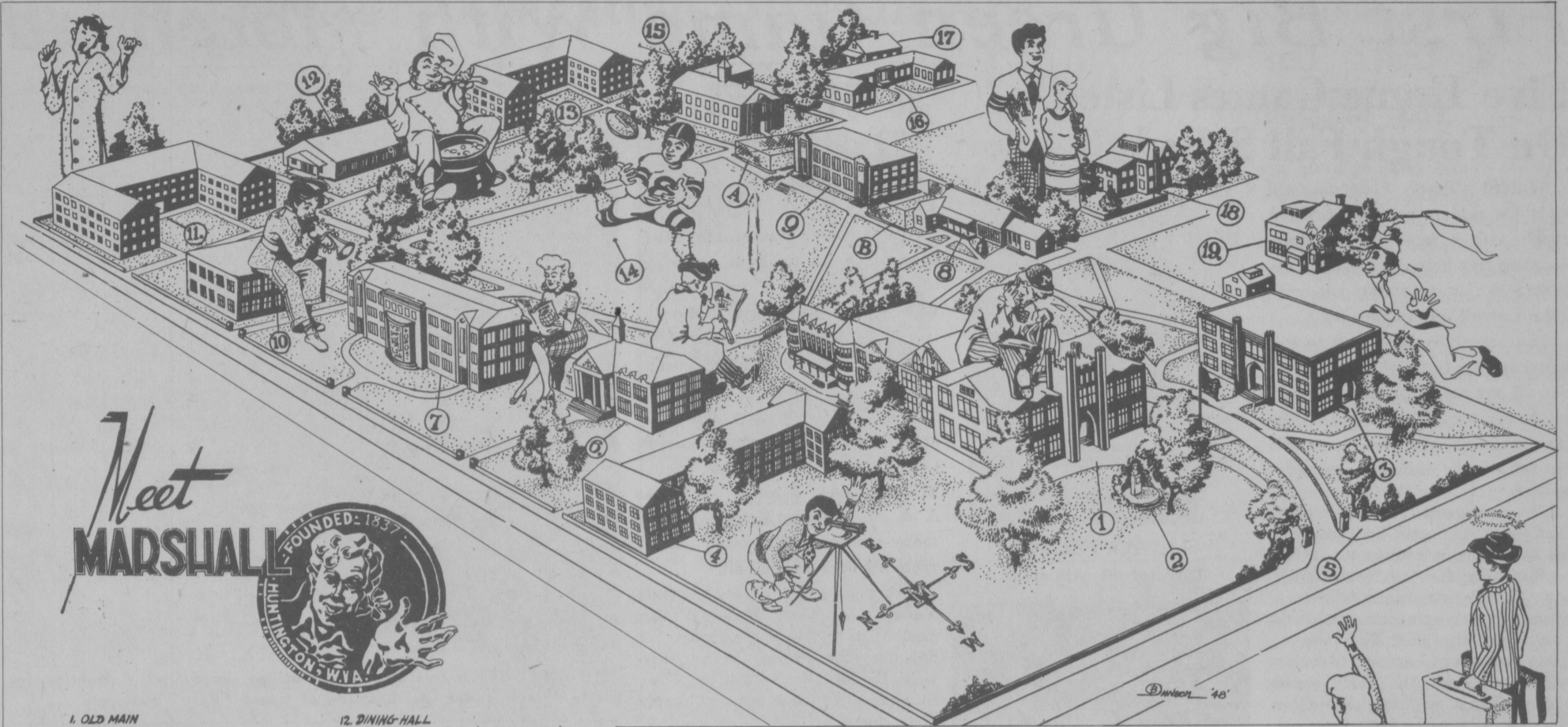
FIVE CROSS COUNTRY MEETS PLANNED FOR '50

Coach Otto "Swede" Gullickson's Cross-Country team has five meets scheduled for this fall, the opener being scheduled for October 14 against Cincinnati University at Fairfield Stadium.

The complete Marshall Cross-Country schedule for 1950:

- Oct. 14—Cincinnati U. Home
- Oct. 21—Bethany Away
- Nov. 4—Tenn. Tech Home
- Nov. 11—Davis & Elkins Home
- Nov. 23—Ohio U. Away

SAVE THIS NUMBERED MAP -- IT'S YOUR GUIDE TO THE CAMPUS



- 1. OLD MAIN
- 2. BUST OF MARSHALL
- 3. NORTHCOFF SCIENCE HALL
- 4. ENGINEERING BUILDING (TEMPORARY)
- 5. MAIN ENTRANCE TO CAMPUS
- 6. MORROW LIBRARY
- 7. NEW SCIENCE BLDG (UNDER CONSTR.)
- 8. SHAWKEY STUDENT UNION
- 9. PHYSICAL EDUCATION BLDG
- 10. MUSIC HALL
- 11. LAIDLEY HALL (WOMEN'S DORM.)

- 12. DINING HALL
- 13. HODGES HALL (MEN'S DORMITORY)
- 14. INTRAMURAL FIELD
- 15. JENKINS LABORATORY SCHOOL
- 16. LABORATORY ANNEX
- 17. CLINIC
- 18. EVERETT HALL (NURSERY SCHOOL)
- 19. PRESIDENT'S HOME
- A. AND B. --- TENNIS COURTS

Here Are Fees Due At Registration Time

Those who are entering Marshall College for the first time are interested in the fees which are due at the time of registration. The student who enrolls for twelve or more hours is considered a full-time student, and the fee he pays at registration is \$40.25. \$30.00 of this amount is for tuition and \$10.25 is for a student activity fee. If the student is not a resident of West Virginia, he must pay \$100.00 tuition plus the \$10.25 student activity fee. The student activity fee entitles the student to admission to the Forum, Artists Series, athletic events, College Theatre, copies of The Parthenon, the yearbook, The Chief Justice, use of the Student Union, and special assemblies. The fee is allocated as follows: Assemblies and Forums 25c, Athletics \$3.00, Parthenon \$1.25, Greenhouse 50c, Student Council 50c, Student Union 50c, College Theatre 50c, Artists Series \$2.50, and Chief Justice \$1.25.

Some courses require payment of laboratory fees. The catalog states the amount payable in the description of the course. If it is necessary for the student to change his schedule after the regular registration period, there is a fee of \$1.00.

For those students who reside in college dormitories there are different fees to be paid depending upon the accommodation received. Laidley Hall has three types of rooms: a small double costing \$50.00 for each student, a large double at \$55.00 per student, and singles at \$60.00. College Hall has double rooms at \$50.00

per student and single rooms at \$55.00. At Hodges Hall all residents pay \$55.00. Allen Court has rooms at \$35.00 per student.

All students living in the dormitories must take their meals in the college Dining Hall. The cost for each semester is \$162.00, payable in full or in two equal installments, the first being due the day of registration, and the second being due on the first day of the second half of the semester. Two per cent consumers' tax is added to board and room charges.

There is one other fee in which the entering student may be interested, and that is Hospitalization and Accident Insurance. This fee is not required of the student, but the service is available for a small fee per semester.

Refunds of fees are completely outlined in the catalog, and if it

becomes necessary for a student to withdraw from school, he can consult the catalog or visit the Comptroller's office where the refund policy will be discussed with him.

All fees are payable at the cashier's office. If checks are used for payment, they must be made payable to Marshall College for the exact amount of the fees being paid.

MARSHALL HAS STUDENTS FROM MANY PLACES

As a student of Marshall College, you will find yourself among people from all over the world. During the school year 1949-50, 49 of West Virginia's 55 counties were represented on the campus. Students from 17 different states and four foreign countries were also enrolled.

Vesper Service
Sunday Evening September 10

Freshman Week Program ~ September 11-16, 1950

12 groups of 50 students
3 sections of 200 students

Activity and Place	Monday Sept. 11		Tuesday Sept. 12		Wednesday Sept. 13		Thursday Sept. 14		Friday Sept. 15		Saturday Sept. 16	Monday Sept. 18
	9:00 AM - 12:00 PM	1:00 - 4:30 PM	9:00 AM - 12:00 PM	1:00 - 4:30 PM	8:30 AM - 12:00 PM	1:00 - 4:30 PM	8:00 AM - 12:00 PM	1:00 - 4:30 PM	8:00 AM - 12:00 PM	1:30 - 4:30 PM	8:30 AM - 12:00 PM	8:00 AM
Assembly Auditorium Main Building	All Sections	All Groups										
Campus Tour	All Sections	All Groups										
English Test Library		Section A Groups 1-4	Section B Groups 5-8	Section C Groups 9-12								
Vocational Aptitude Test Auditorium Main Building		Section B Groups 5-8	Section C Groups 9-12	Section A Groups 1-4								
ACE Test Auditorium New Science Building		Section C Groups 9-12	Section A Groups 1-4	Section B Groups 5-8								
Placement Test Chemistry Auditorium New Science Building		3:30 PM All Sections All Groups										
Placement Tests French M 211 Latin M 210 Spanish M 216				3:30 PM All Sections All Groups								
Evening Social Activities	Freshman Dance Student Union	President's Reception Student Union Record Hop Greenhouse			Movie Greenhouse					7:00-9:00 PM Library Registration for Part Time, Evening and Saturday Students		